

VETRITE<sup>®</sup>  
tile

SICIS<sup>®</sup>





# VETRITE<sup>®</sup> tile

---

Nascono i “piccoli” formati per offrire la possibilità di dare alle pareti una veste geometrica in un unico colore da scegliere tra le 25 tonalità proposte o in nuances di colori abbinata ai numerosi pattern per armonizzare ogni ambiente a discrezione del progettista.

La molteplicità dei formati rende facile la collocazione in svariate tipologie di ambienti che vanno dal semplice bagno, alle pareti cucina fino ad arrivare a strutture architettoniche importanti quali musei o grandi alberghi oltre alla possibilità di creare dettagli più contenuti all’interno di nicchie o di piccoli spazi espressamente immaginati su misura, dagli Interior Design per case o ambienti pubblici.

Sostituisce brillantemente carte da parati, stucchi di vario genere, materiali da rivestimento naturali e sintetici per abbracciare ogni stile e ogni nazionalità.

*A variety of small formats conceived to create infinite geometric patterns for wall surfaces. Choose from one color to 25, combine sizes, colors and shapes to create truly unique wall murals.*

*The multiplicity of formats and its technical characteristics makes it easy to place in a variety of environments ranging from simple bathrooms to kitchen walls to major architectural structures such as lobbies, museums or hotels. The smooth surface is easy to maintain and clean.*

*The smaller formats allow application in diminutive spaces such as niches, highlighting and detailing interesting jewel box works of art.*

*A modern solution which brilliantly replaces wallpaper, stucco, natural and synthetic finishing materials for all styles and tastes.*

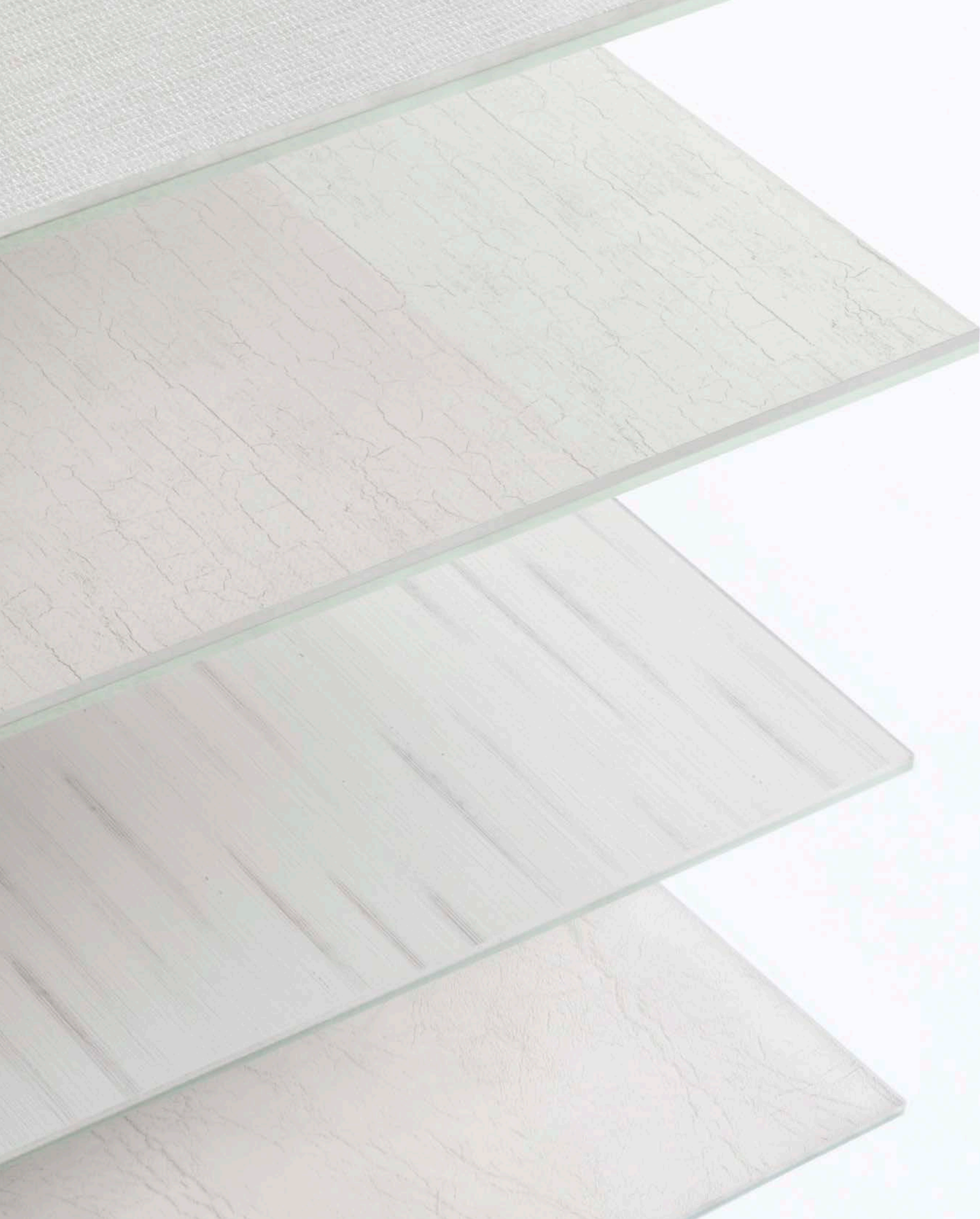






**N**UOVE EVOLUZIONI PER  
IL RIVESTIMENTO  
*Next Evolution in covering*







# INDICE

## *Index*

---

**6** FORMATI  
*Sizes*

**8** 25 COLORI DELLA VETRITE TILE  
*25 Colors of Vetrite Tile*

**10** Ambienti  
*Vignettes*

**124** GAMMA COLORI  
*Colors Key*

**128** FINITURE  
*Finishes*

**130** DECORATI  
*Prints*

**136** LISTELLI  
*Mouldings*

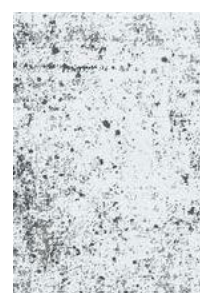
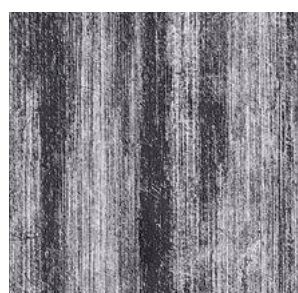
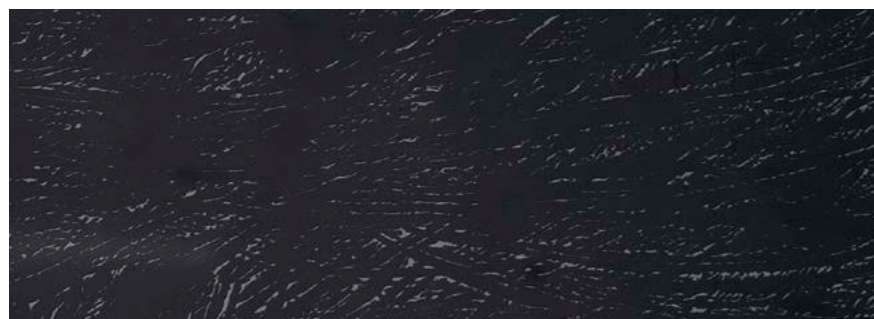
**138** PROPOSTE ABBINAMENTI  
*Coordinating Trims*

**140** APPLICAZIONI / UTILIZZI  
*Applications / Usages*

**144** INDICE PATTERN  
*Pattern Index*

**152** CARATTERISTICHE TECNICHE  
*Technical Characteristics*

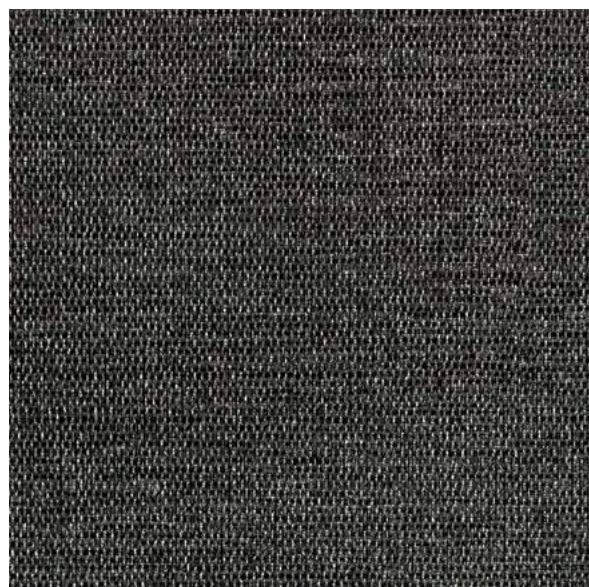
4



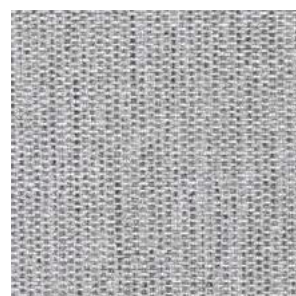




47



53



5



67



77



75





# 6 FORMATI

## *Sizes*

---

Su richiesta tutti i formati sono disponibili in versione bisellata.  
*All the formats are available either with beveled edges.*

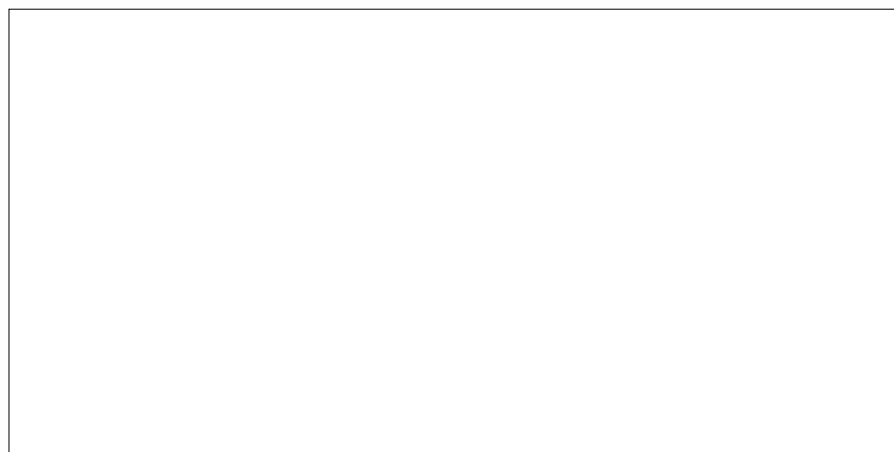


Dettaglio bisellatura 12mm.  
*Detail beveled 1/2"*



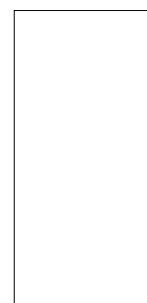
**29,6x59,3cm**

***11<sup>5</sup>/<sub>8</sub>"x23<sup>3</sup>/<sub>8</sub>"***



**9,8x19,7cm**

***3<sup>7</sup>/<sub>8</sub>"x7<sup>3</sup>/<sub>4</sub>"***



**19,7x59,3cm**

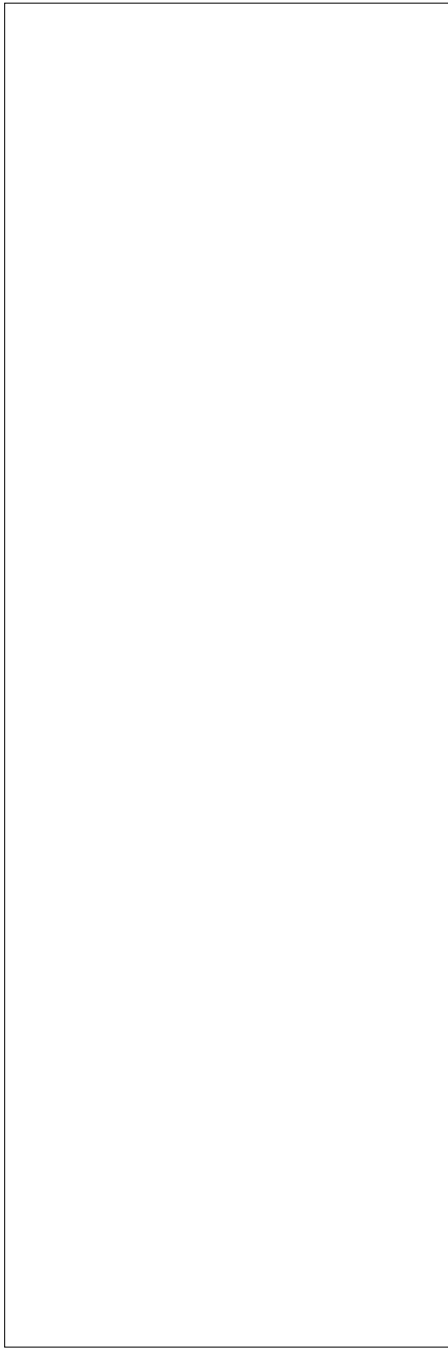
***7<sup>3</sup>/<sub>4</sub>"x23<sup>3</sup>/<sub>8</sub>"***





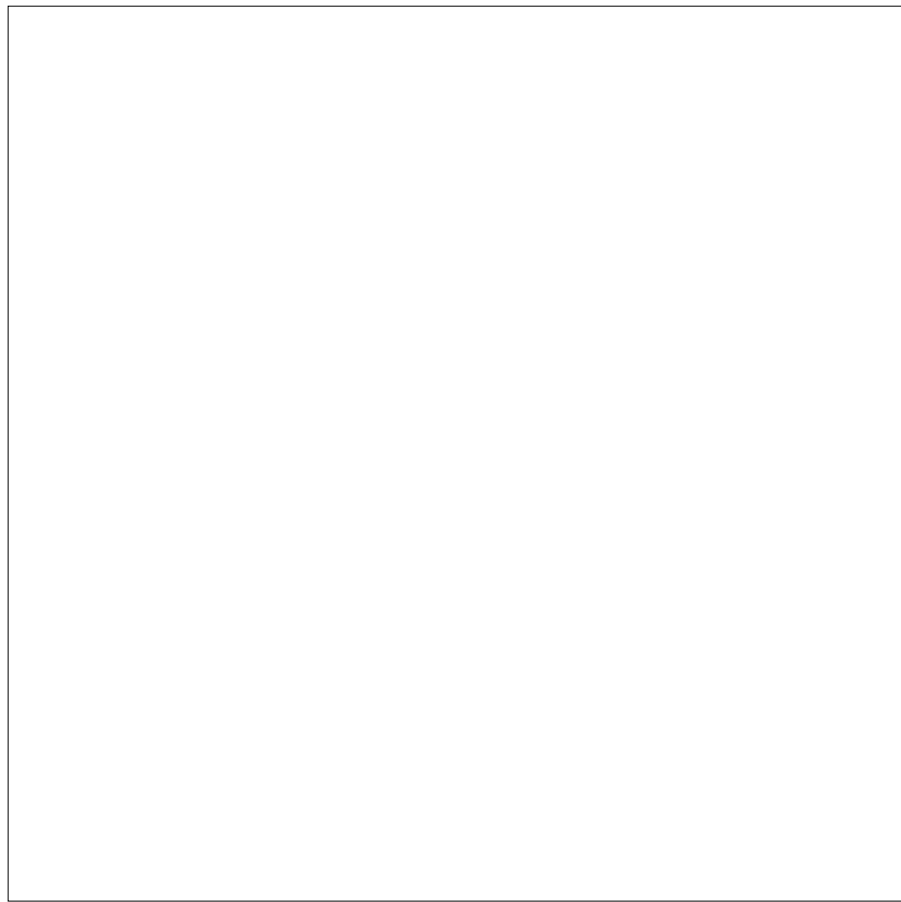
**29,6x89cm**

*11<sup>5</sup> 8" x 35"*



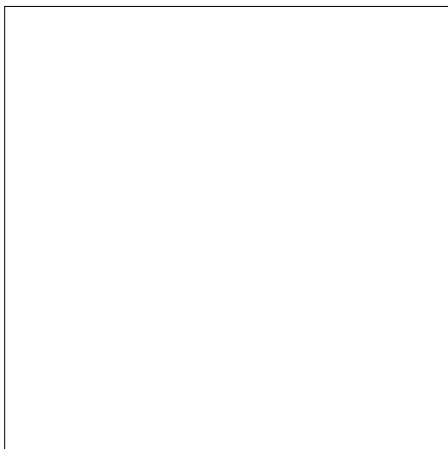
**59,3x59,3cm**

*23<sup>3</sup> 8" x 23<sup>3</sup> 8"*



**29,6x29,6cm**

*11<sup>5</sup> 8" x 11<sup>5</sup> 8"*



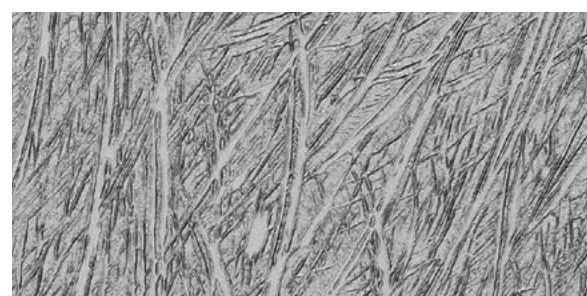
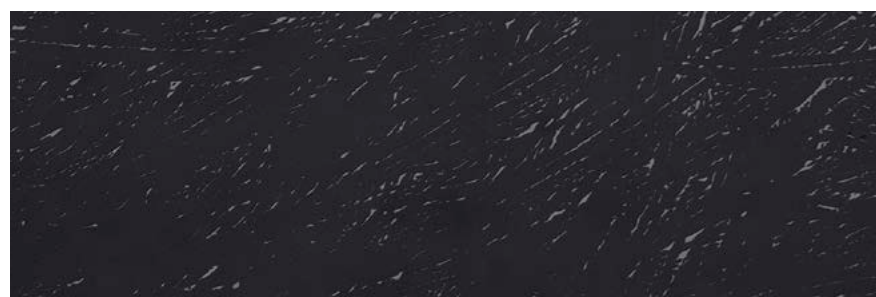
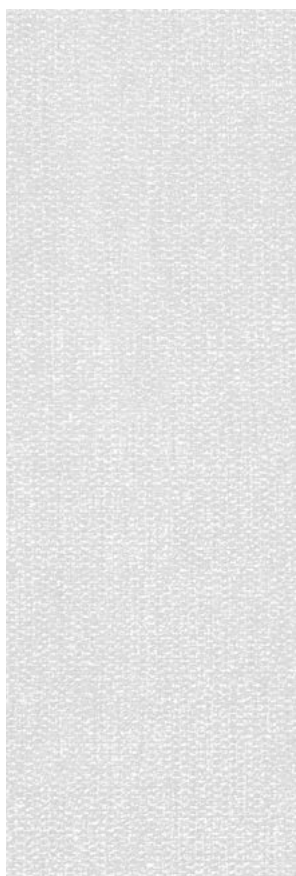


# 25 **COLORI DELLA VETRITILE TILE**

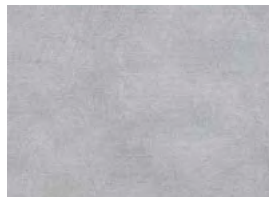
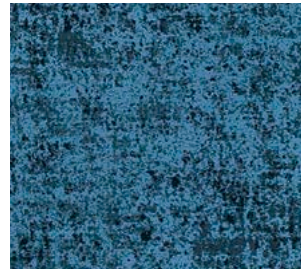
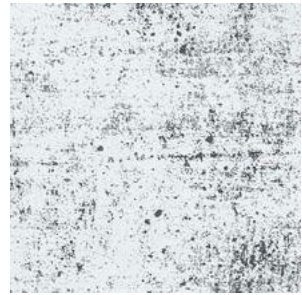
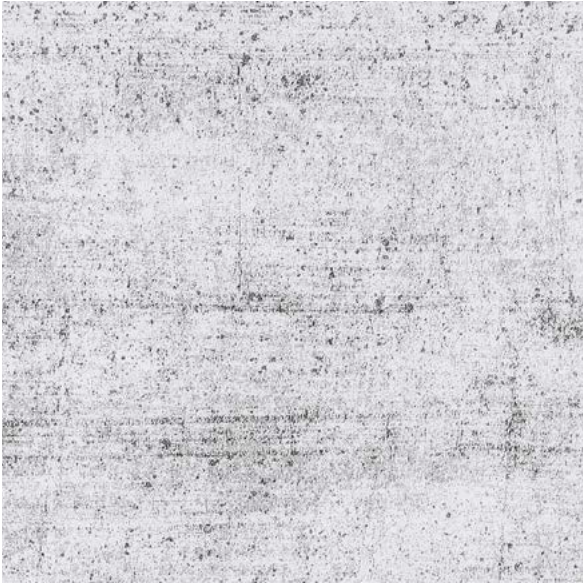
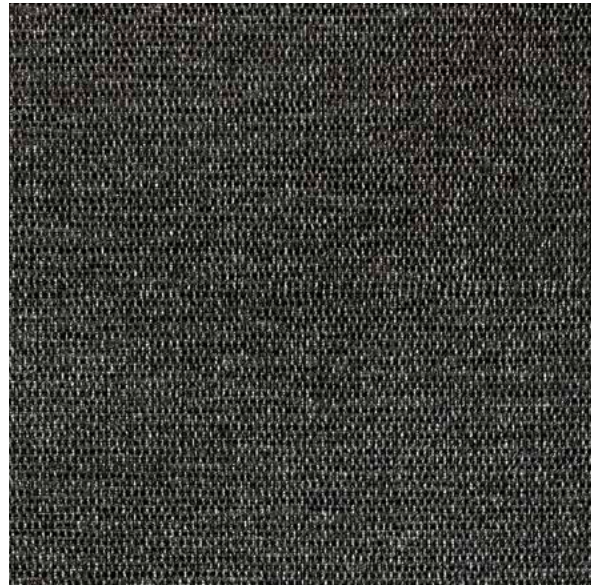
## *Colors of Vetritle Tile*

---

I toni dei campioni sono da considerarsi indicativi.  
*Sample colours are considered indicative.*



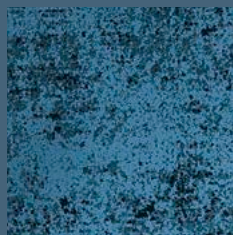




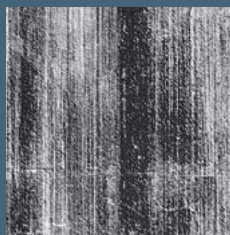


# ANTIQUÉ BLUE

## COLORI ED ELEMENTI UTILIZZATI NEL PATTERN *Pattern colors and dimensions*



1 Antique Blue



2 Fuliggine



3 Sulphur Tortora

10



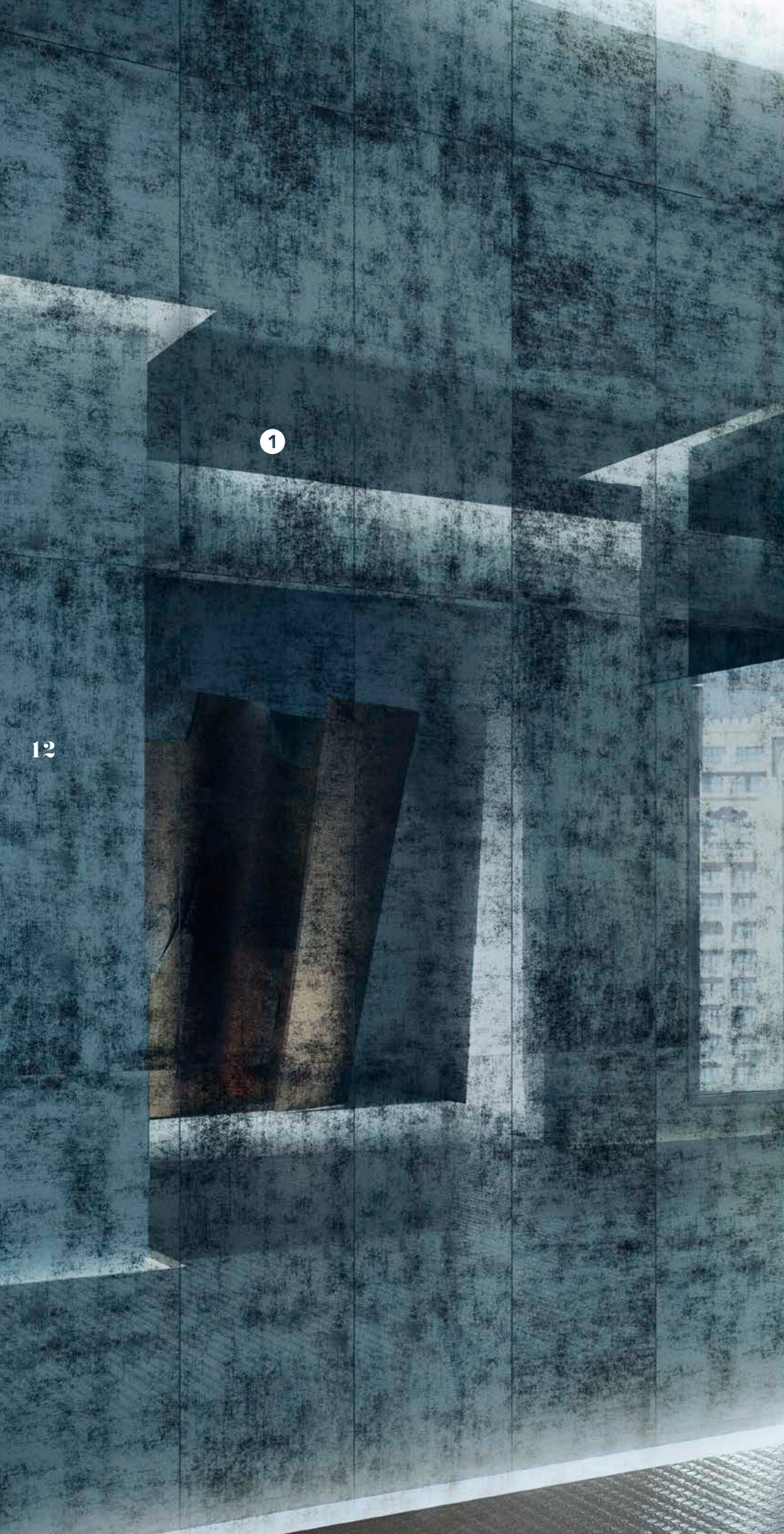




1

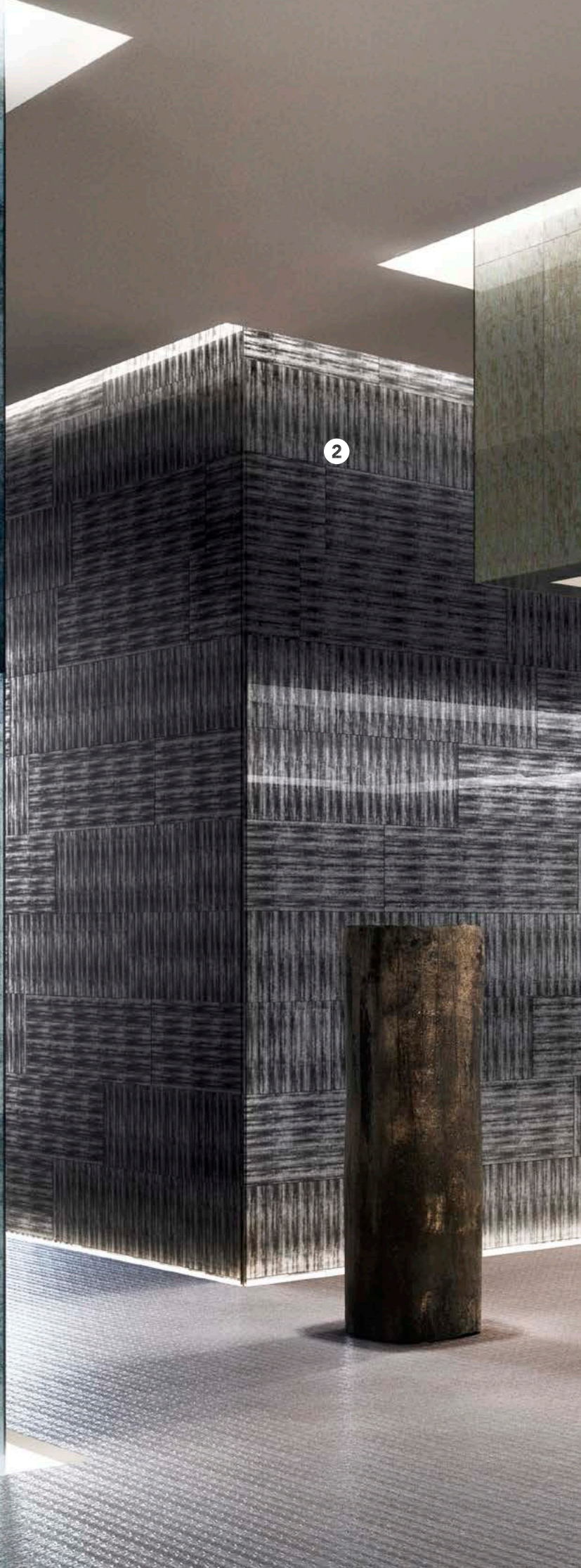
11





1

12



2



3

13

- 1 Antique Blue
- 2 Fuliggine
- 3 Sulphur Tortora



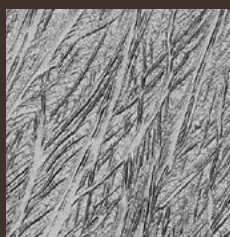
# PISAC TOBACCO

## COLORI ED ELEMENTI UTILIZZATI NEL PATTERN *Pattern colors and dimensions*



Boheme Grey

A: 1PZ  
B: 1PZ  
C: 1PZ



Feather Grey

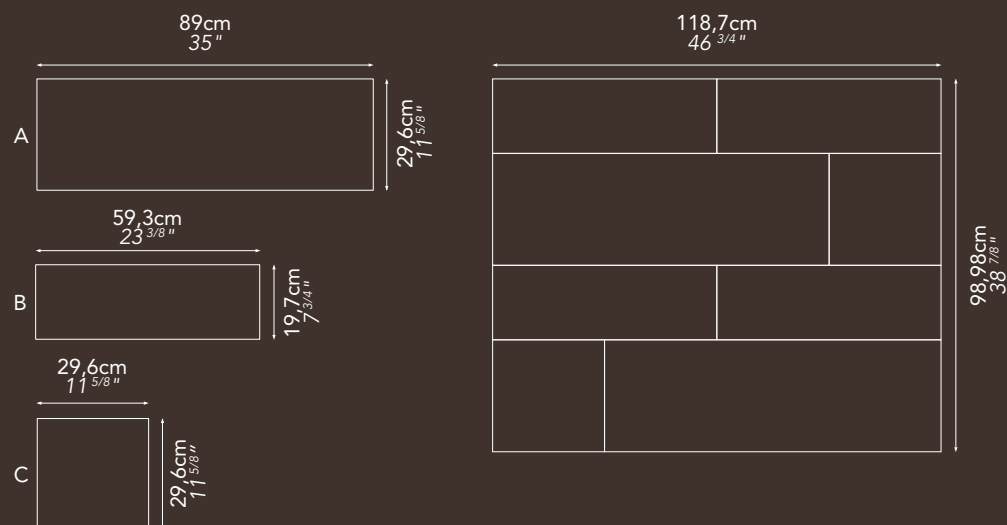
A: 1PZ  
B: 1PZ  
C: 1PZ



Feather Cipria

B: 2PZ

14







15



Pisac Tobacco









1

17

2

1 Pisac Tobacco pag. 148

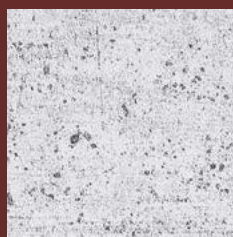
2 Pisac Feather Grey pag. 148



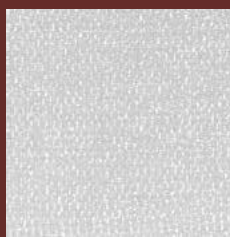
# MIX MYSTRAS

## COLORI ED ELEMENTI UTILIZZATI NEL PATTERN

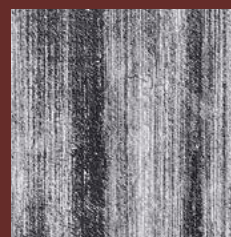
### *Pattern colors and dimensions*



Pergamino Grey  
50 %



Tela White  
25 %



Fuliggine  
25 %

18

















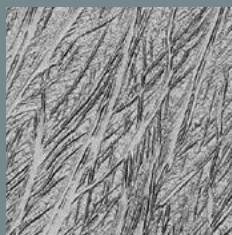
# TROY: PELTRO MUD / FEATHER GREY TELA WHITE

**COLORI ED ELEMENTI UTILIZZATI NEL PATTERN**  
*Pattern colors and dimensions*



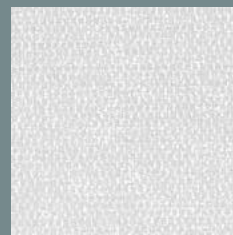
**1** Troy Peltro Mud

A: 2PZ  
B: 5PZ  
C: 2PZ



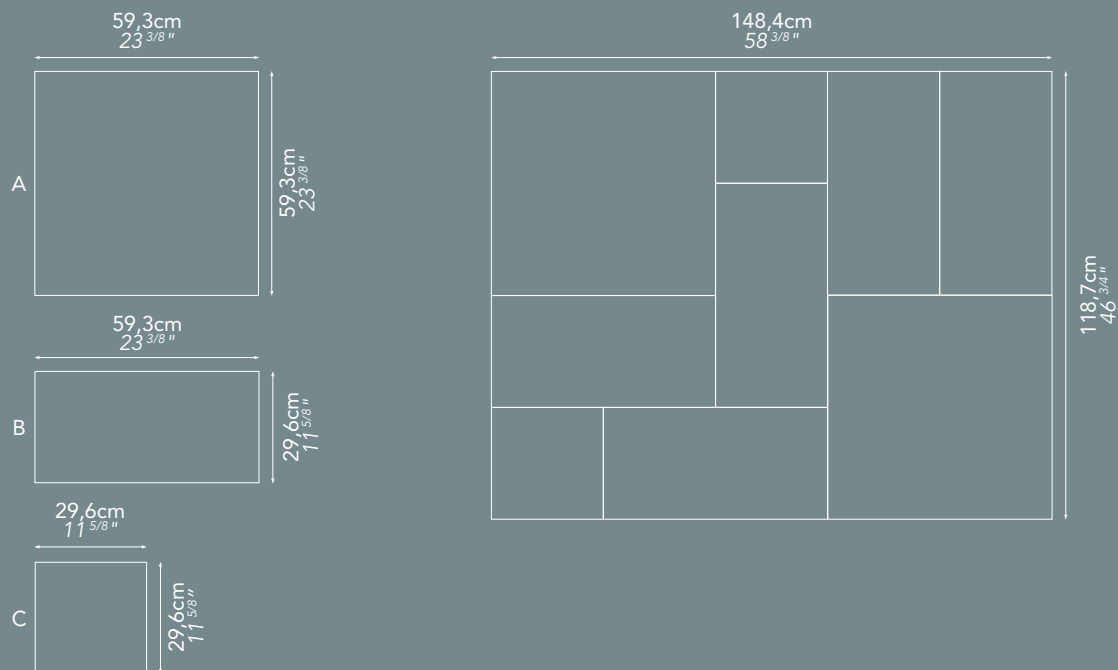
**2** Troy Feather Grey

A: 2PZ  
B: 5PZ  
C: 2PZ



**3** Troy Tela White

A: 2PZ  
B: 5PZ  
C: 2PZ







3

1

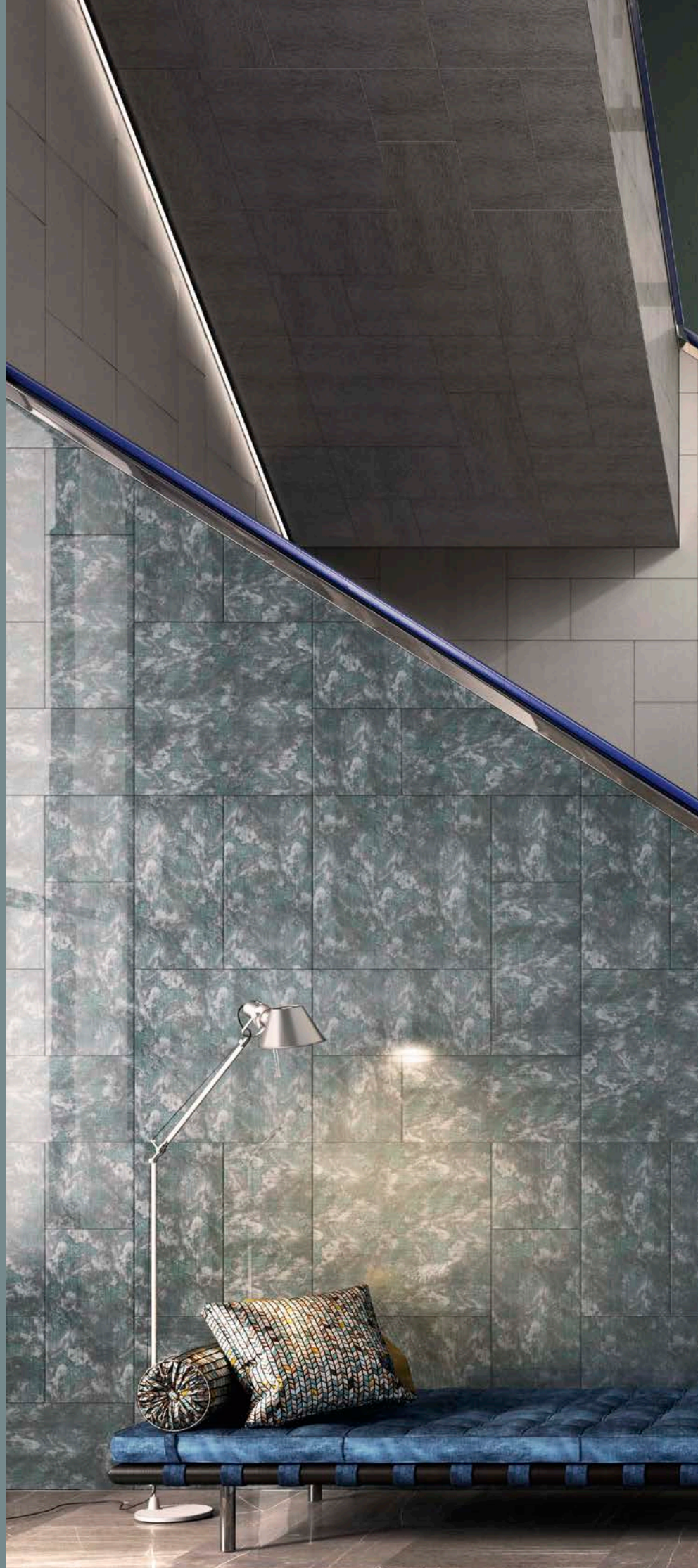
2

23

- 1 Troy Peltro Mud
- 2 Troy Feather Grey
- 3 Troy Tela White



- 1 Troy Peltro Mud
- 2 Troy Feather Grey
- 3 Troy Tela White







3

2

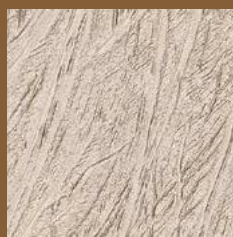
1

25



# TIPÓN TORTORA

## COLORI ED ELEMENTI UTILIZZATI NEL PATTERN *Pattern colors and dimensions*



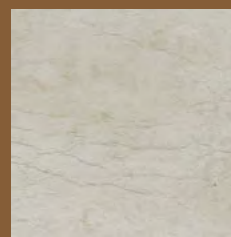
Feather Cipria

A: 3PZ  
B: 1PZ  
C: 1PZ  
D: 1PZ



Elephant Charcoal

A: 3PZ  
B: 1PZ  
C: 1PZ  
D: 1PZ



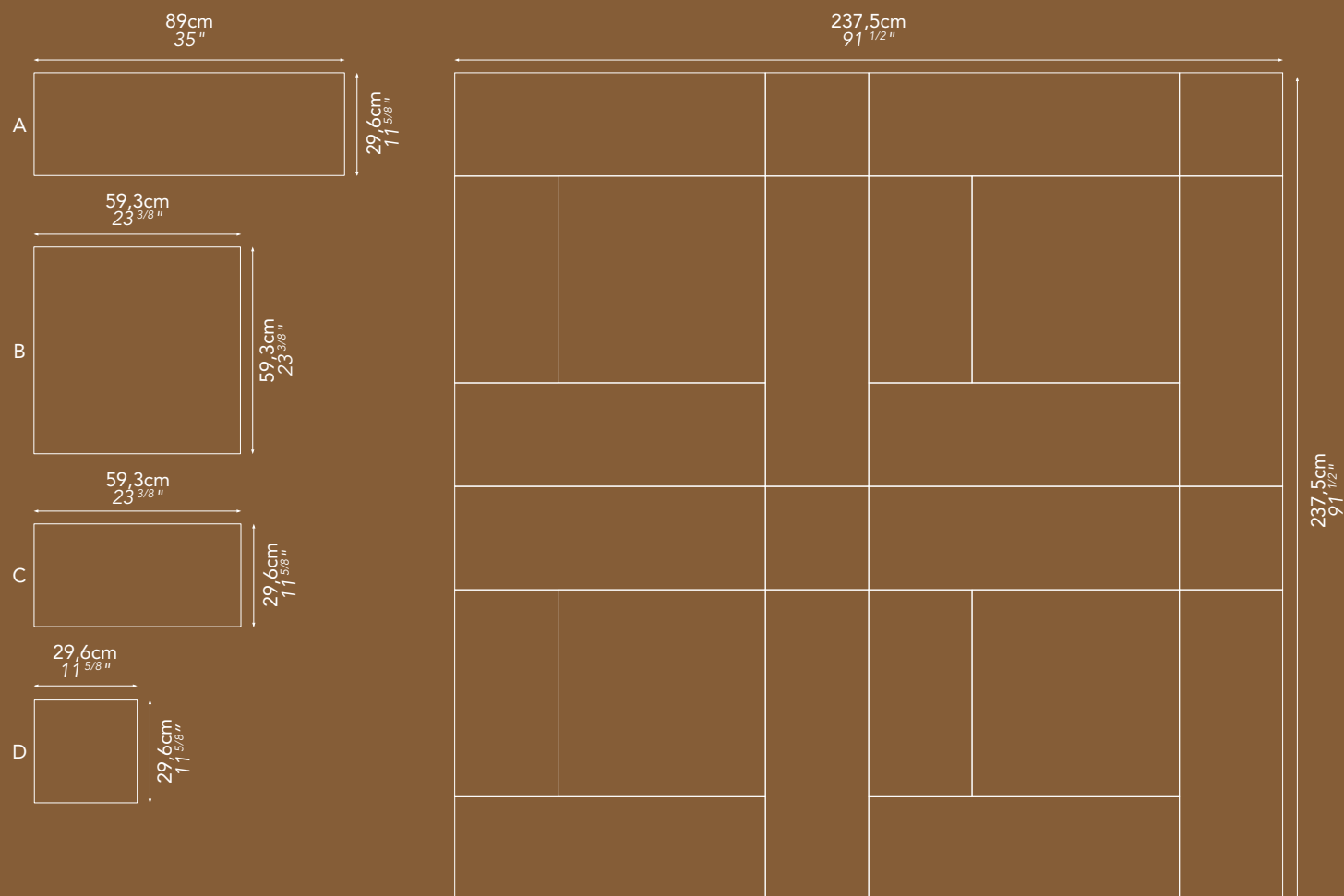
Suede Cream

A: 3PZ  
B: 1PZ  
C: 1PZ  
D: 1PZ



Sulphur Tortora

A: 3PZ  
B: 1PZ  
C: 1PZ  
D: 1PZ











28

1

2





1

2

1 Tipón Tortora pag. 149

2 Tipón Feather Cipria pag. 149



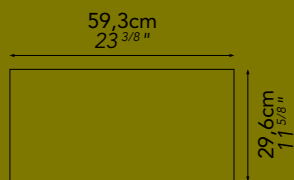
# SULPHUR TORTORA

## COLORI ED ELEMENTI UTILIZZATI NEL PATTERN *Pattern colors and dimensions*



Sulphur Tortora

30

















# TAGLI DI LUCE

## *Slices of Light*

Dettagli Architettonici: incredibile facilità di taglio per inserire qualunque tipo di installazione.  
*Architectural details can be easily cut to accept any kind of fixtures.*





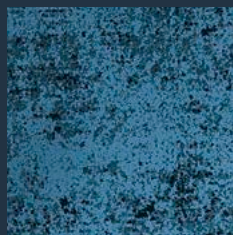




# UGARIT ANTIQUE BLUE

## COLORI ED ELEMENTI UTILIZZATI NEL PATTERN

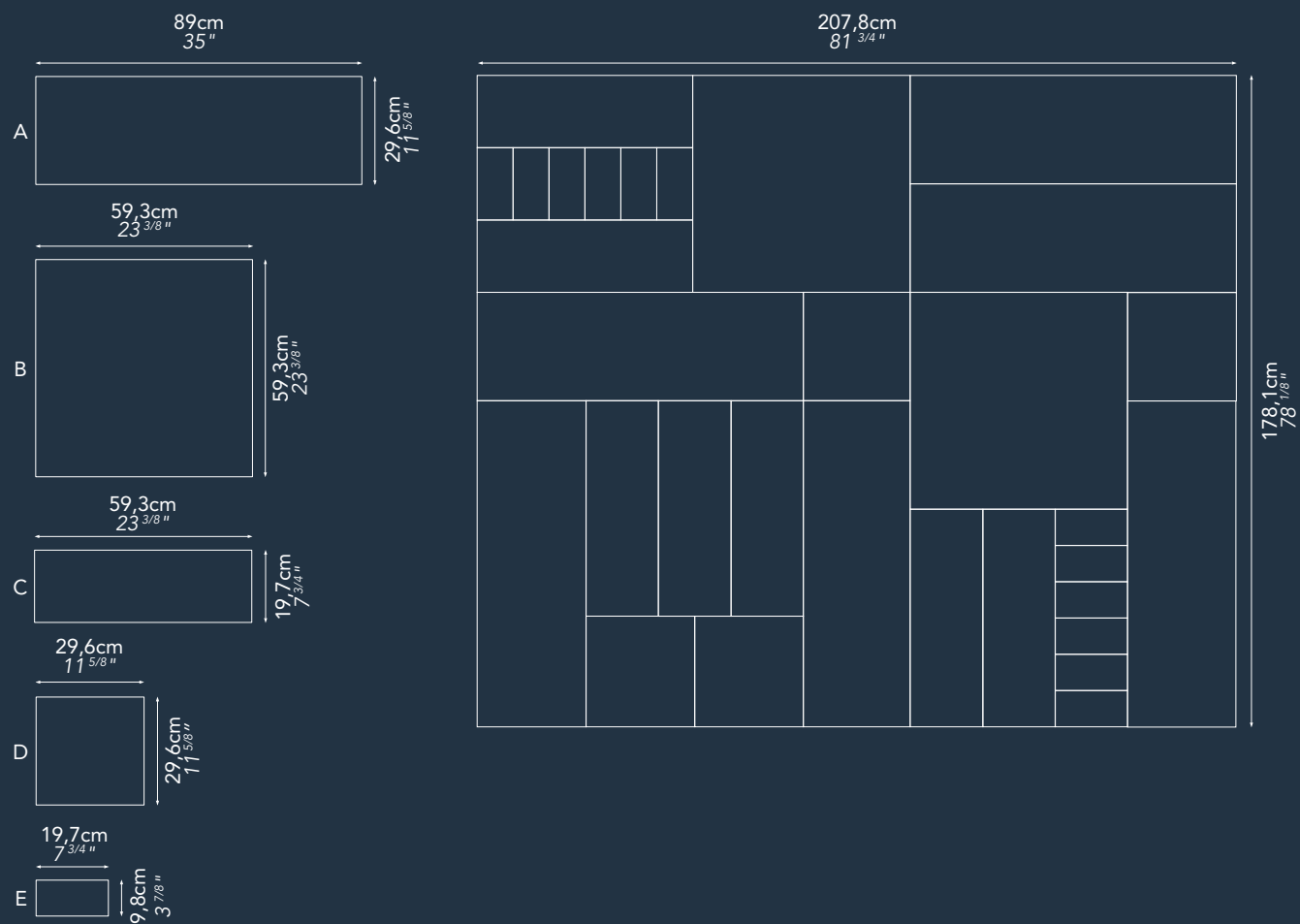
### *Pattern colors and dimensions*



Antique Blue

- A: 6PZ
- B: 2PZ
- C: 7PZ
- D: 4PZ
- E: 12PZ

36

















# KELASURI TORTORA

## COLORI ED ELEMENTI UTILIZZATI NEL PATTERN *Pattern colors and dimensions*



Elephant Tortora

B: 3PZ  
C: 1PZ



Sulphur Tortora

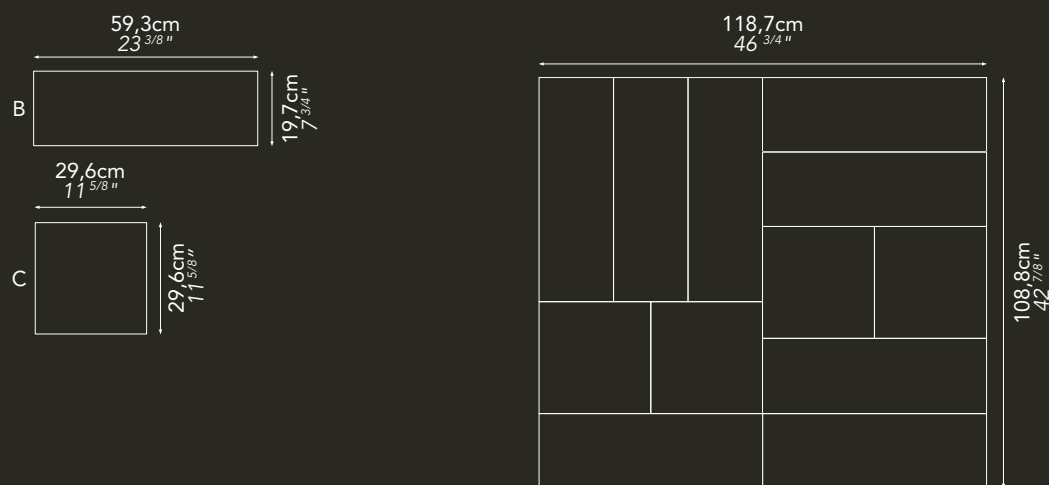
B: 3PZ  
C: 1PZ



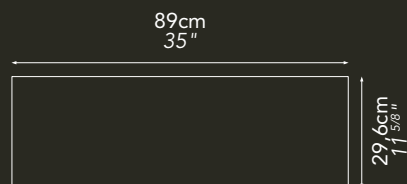
Feather Cipria

B: 2PZ  
C: 2PZ

40



### 2 Sulphur Tortora







1

2

- 1 Kelasuri Tortora
- 2 Sulphur Tortora



# CORTEZA GLACIAL

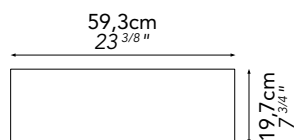
## COLORIED ELEMENTI UTILIZZATI NEL PATTERN

### *Pattern colors and dimensions*



Corteza Glacial

42

















# LHASA GLACIAL

## COLORI ED ELEMENTI UTILIZZATI NEL PATTERN *Pattern colors and dimensions*



Corteza Glacial

A:24PZ



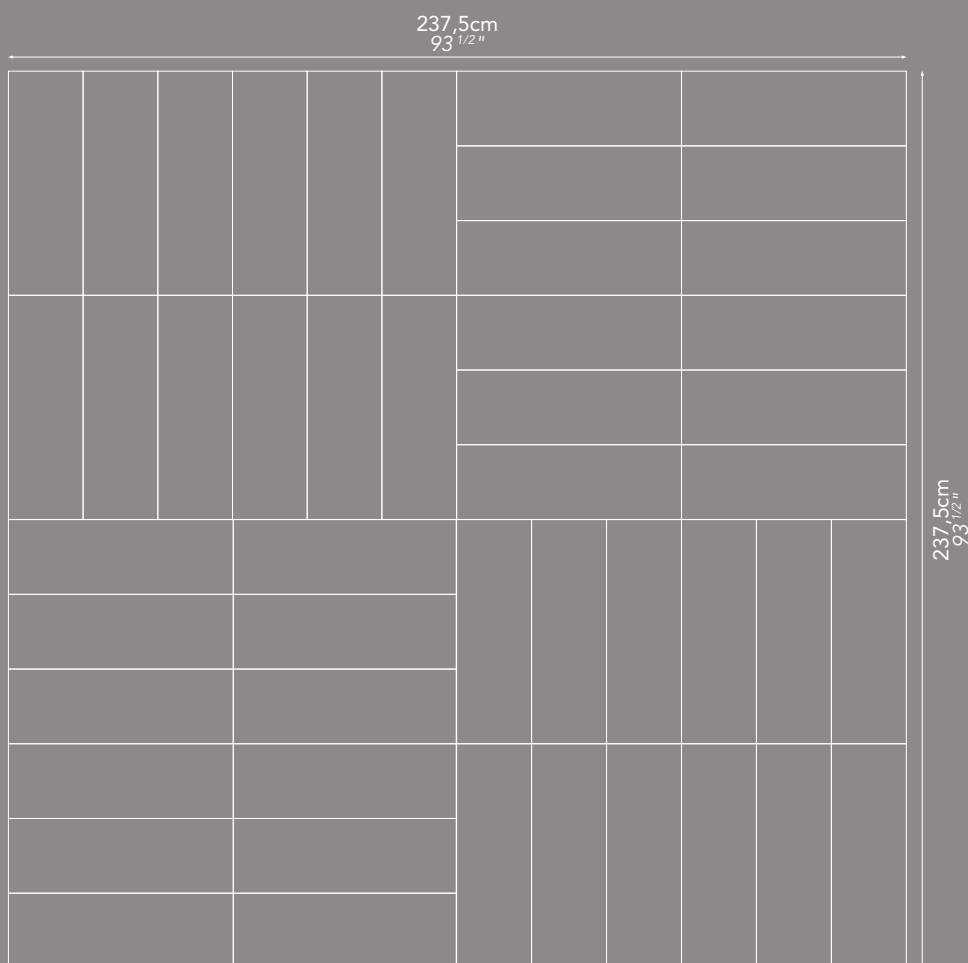
Antique

A:24PZ

46



VETRITE Corteza Glacial  
embedded in frames







1

17

2

- 1 Lhasa Glacial
- 2 Corteza Glacial

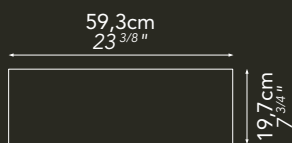


# TIMBER GLACIAL

## COLORI ED ELEMENTI UTILIZZATI NEL PATTERN *Pattern colors and dimensions*



Timber Glacial



Ante cucina in VETRITE Canapa Sutra Glacial: Lastra 120x280  
Vetrite Cabinet Doors Canapa Sutra Glacial: Slab 120x280







1

2

49

- 1 Timber Glacial
- 2 Canapa Sutra Glacial



# COPÁN EFESTO GREEN

## COLORI ED ELEMENTI UTILIZZATI NEL PATTERN

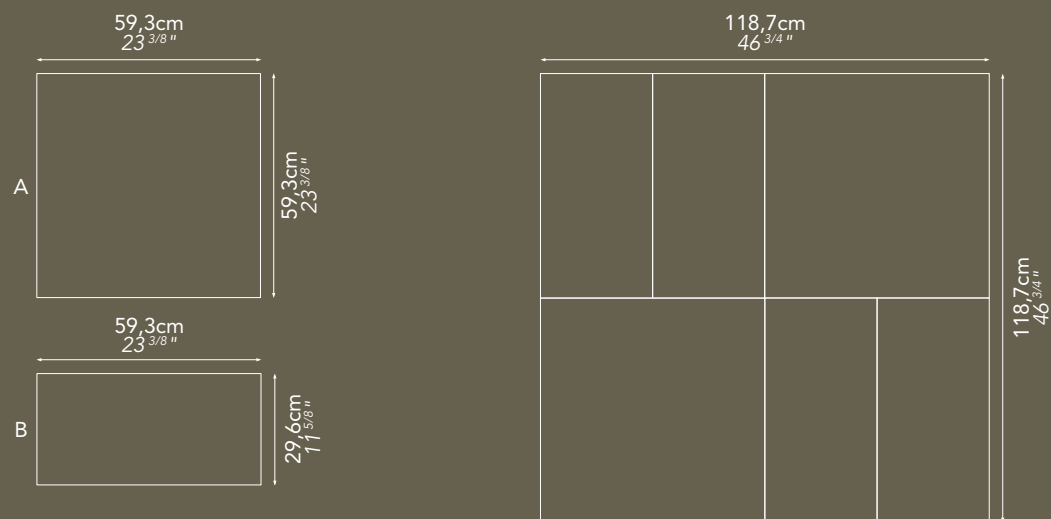
### *Pattern colors and dimensions*



Efesto Green

A: 2PZ  
B: 4PZ

50

















# CAMELOT CLASSIC

## COLORI ED ELEMENTI UTILIZZATI NEL PATTERN *Pattern colors and dimensions*



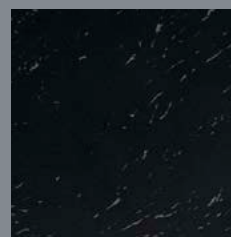
Tela White

B: 4PZ



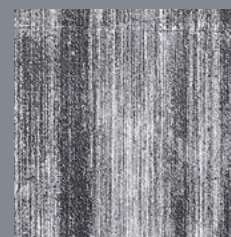
Corteza Glacial

B: 4PZ



Feather Black

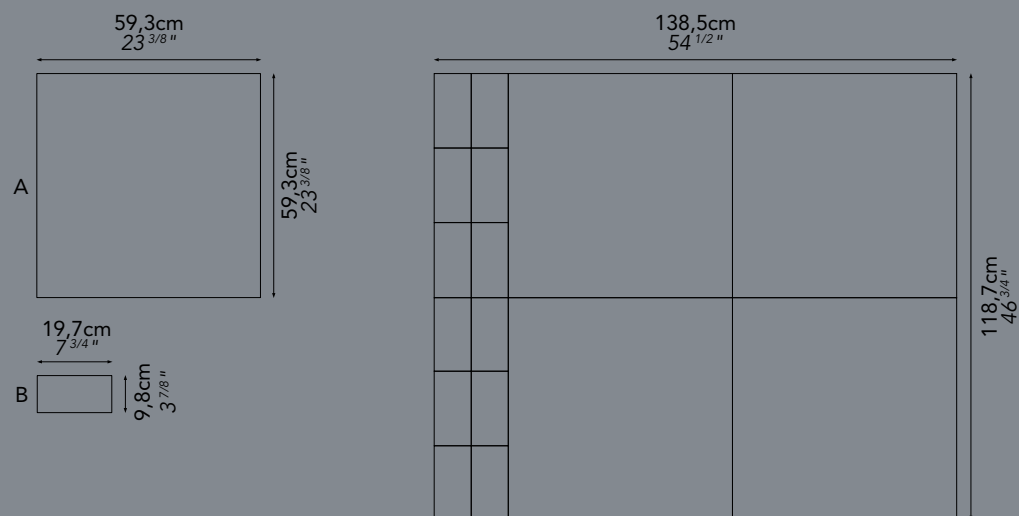
B: 4PZ



Fuliggine

A: 4PZ

54











2

56





1

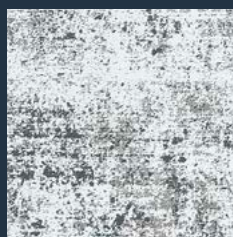
57

- 1 Camelot Classic
- 2 Corteza Glacial



# ANTIQUÉ

## COLORI ED ELEMENTI UTILIZZATI NEL PATTERN *Pattern colors and dimensions*



Antique

58



Dettaglio bisellatura 12mm.  
*Detail beveled 1/2"*

Su richiesta tutti i formati sono disponibili in versione bisellata.  
*All the formats are available either with beveled edges.*



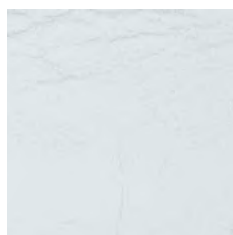




# LPOSTILO GLACIAL

## COLORIED ELEMENTI UTILIZZATI NEL PATTERN

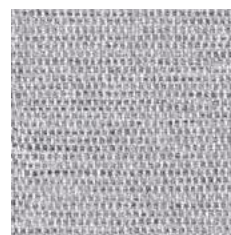
### *Pattern colors and dimensions*



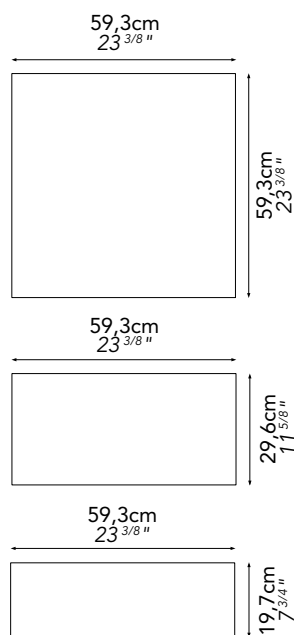
Elephant Panna



Corteza Glacial



Tela Grey

















# V

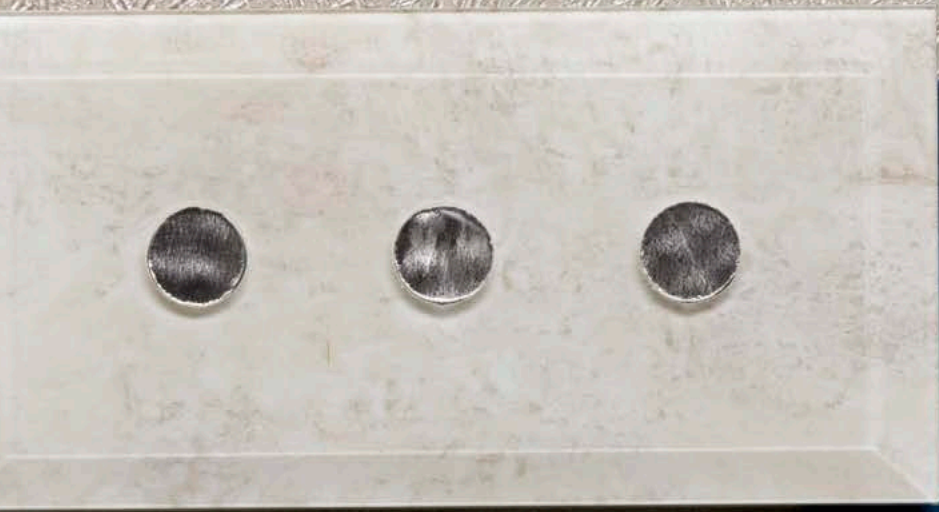
## ESTIRE L'ARCHITETTURA

### *Dressing Architectural Elements*

Dettagli Architettonici: incredibile facilità di taglio per inserire qualunque tipo di installazione.  
*Architectural details can be easily cut to accept any kind of fixtures.*









# ANTIQUÉ

## COLORI ED ELEMENTI UTILIZZATI NEL PATTERN *Pattern colors and dimensions*



Antique

66



Dettaglio bisellatura 12mm.  
*Detail beveled 1/2"*

Su richiesta tutti i formati sono disponibili in versione bisellata.  
*All the formats are available either with beveled edges.*







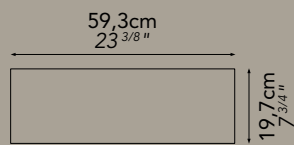
# PLUTONE TAUPE

## COLORI ED ELEMENTI UTILIZZATI NEL PATTERN *Pattern colors and dimensions*



Plutone Taupe

68











Plutone Taupe

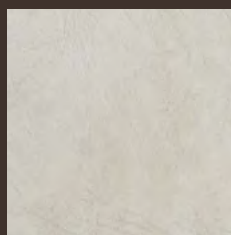






# SIMATAI CREAM

## COLORI ED ELEMENTI UTILIZZATI NEL PATTERN *Pattern colors and dimensions*



Suede Cream

A: 4PZ



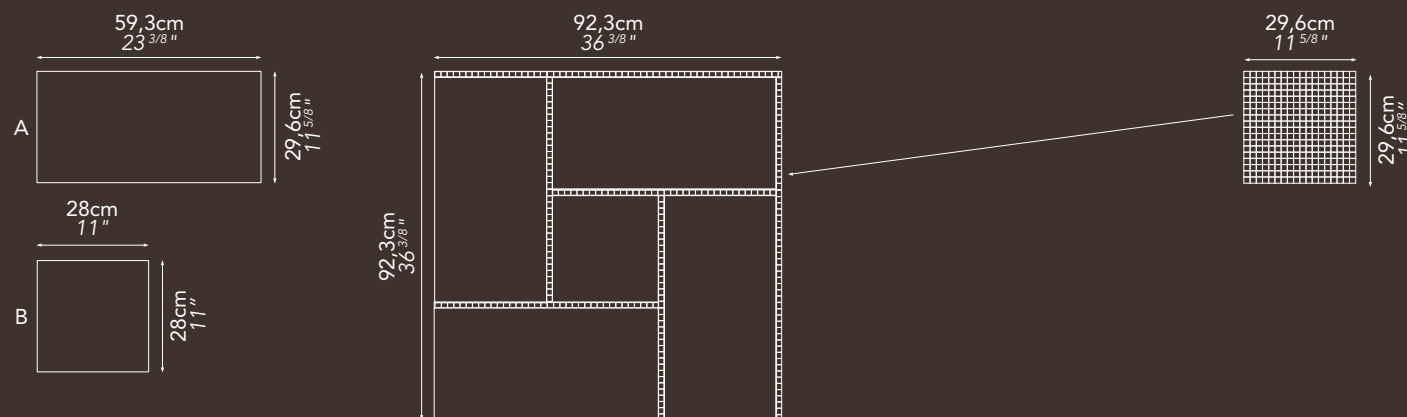
Sulphur Tortora

B: 1PZ



Vis Two - Mosaic

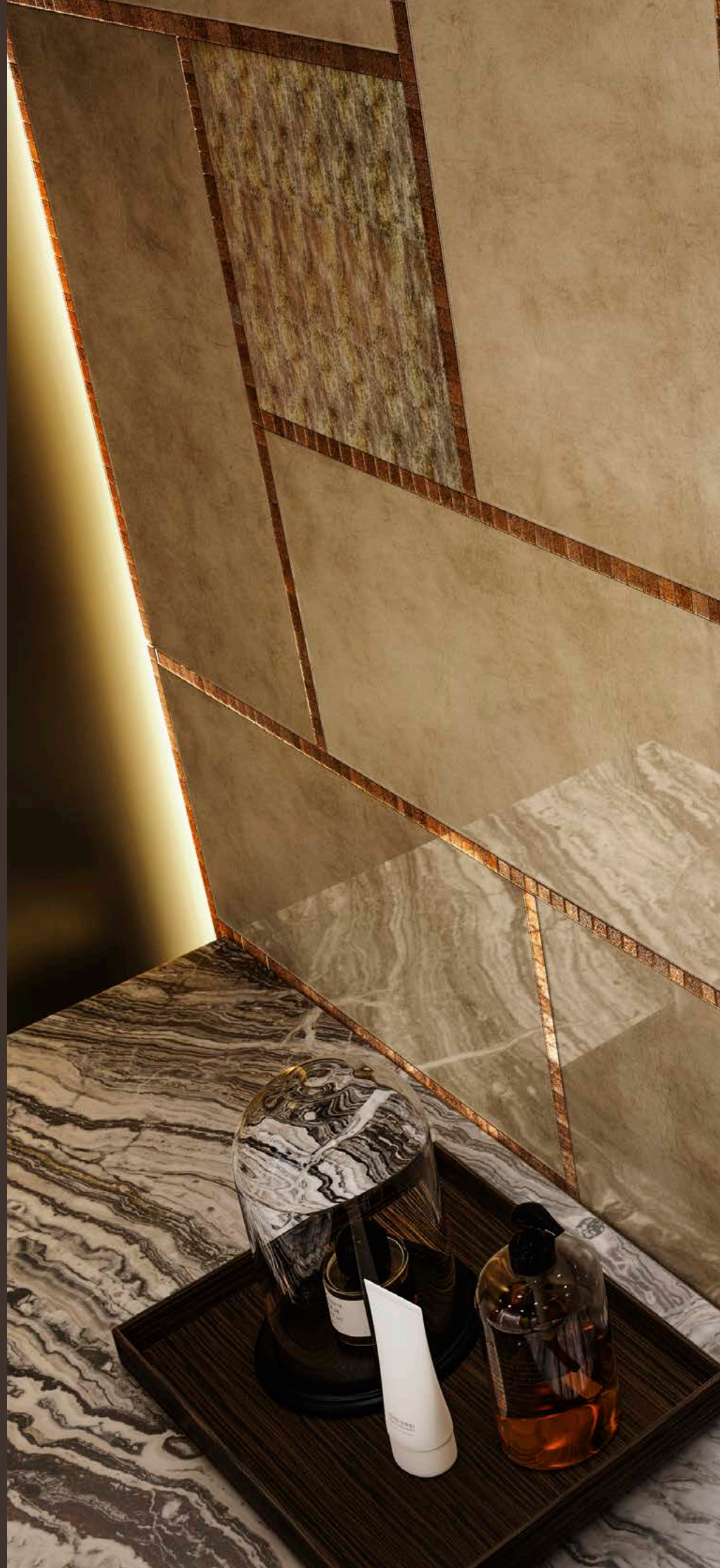
72

















# MEGALITO GREEN

## COLORI ED ELEMENTI UTILIZZATI NEL PATTERN

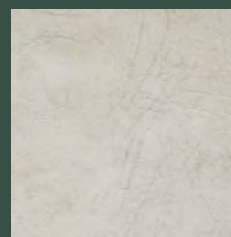
### *Pattern colors and dimensions*



Efesto Green

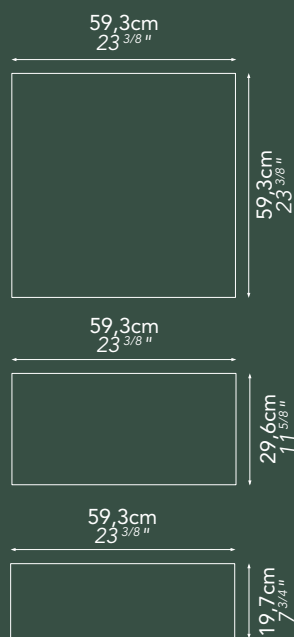


Elephant Charcoal



Suede Cream

76









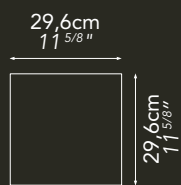
# ERIS GREY

## COLORIED ELEMENTI UTILIZZATI NEL PATTERN *Pattern colors and dimensions*



Eris Grey

78

















# LZMIR CHARCOAL

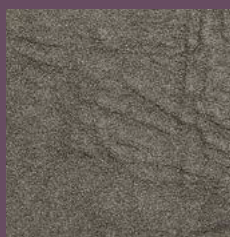
## COLORI ED ELEMENTI UTILIZZATI NEL PATTERN

### *Pattern colors and dimensions*



Iguana Tortora

B: 1PZ



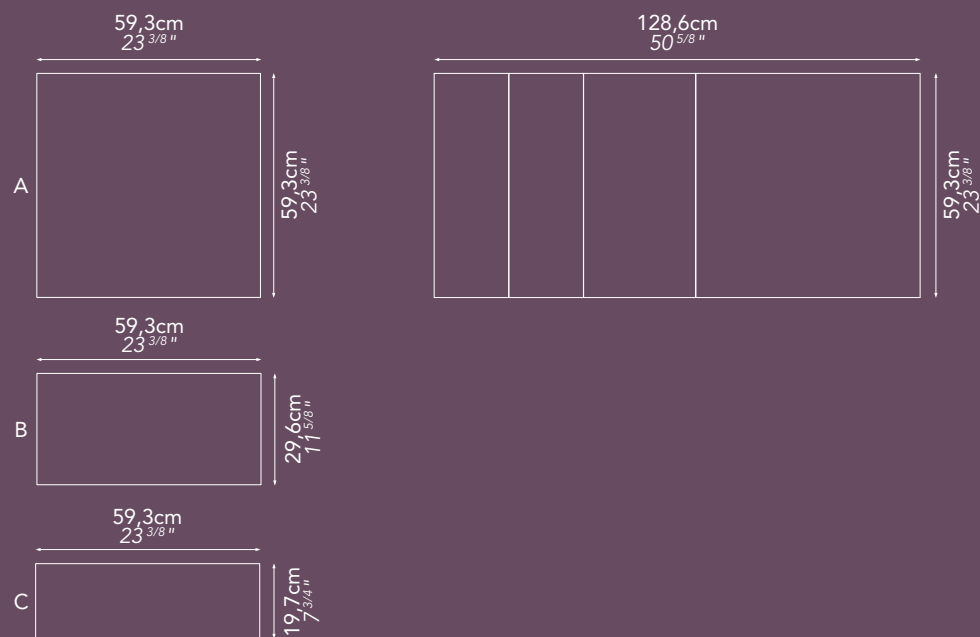
Elephant Charcoal

A: 1PZ  
C: 1PZ



Tela Brown

C: 1PZ















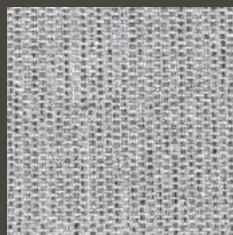
- 1 Izmir Charcoal
- 2 Mosaic Metamorfosis



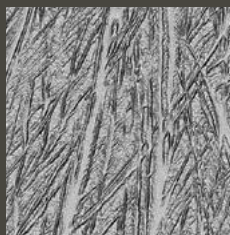
# MIX CYCLOPEAN

## COLORI ED ELEMENTI UTILIZZATI NEL PATTERN

### *Pattern colors and dimensions*



Tela Grey  
50 %



Feather Grey  
50 %

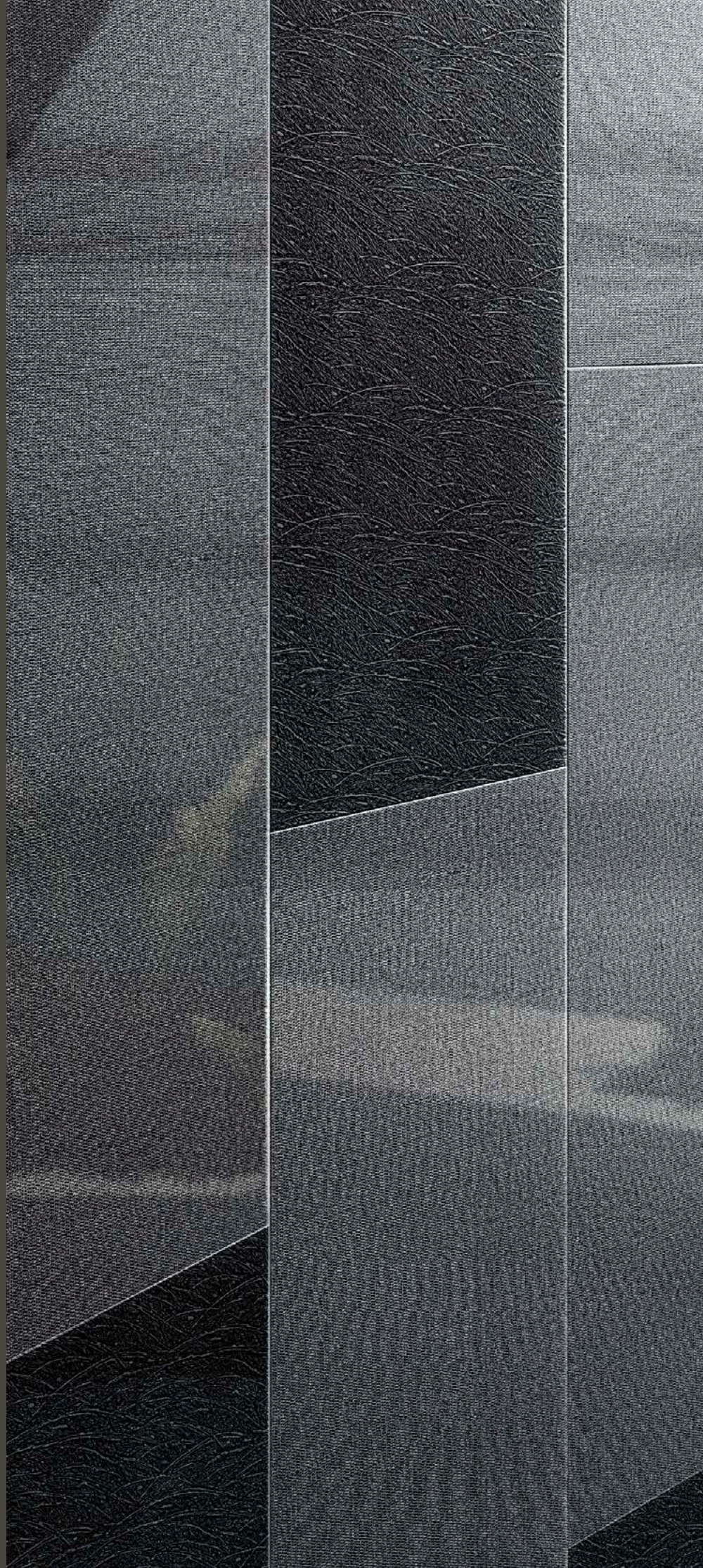
86

















# MIX VISBY

## COLORI ED ELEMENTI UTILIZZATI NEL PATTERN *Pattern colors and dimensions*



Tela Brown  
25 %



Tela Grey  
25 %

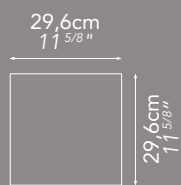


Elephant Tortora  
25 %

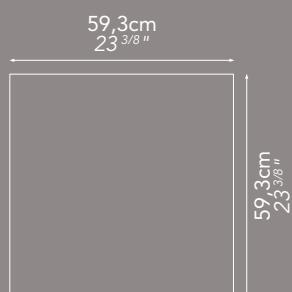


Iguana Tortora  
25 %

90



PAVIMENTO: Tela Grey Spessore 10mm  
FLOOR: Tela Grey Thickness 10mm











1

92





03

2

- 1 Mix Visby
- 2 Tela Grey



# LA FORMA DELL'ACQUA

## *Water Forms*

Dettagli Architettonici: incredibile facilità di taglio per inserire qualunque tipo di impianto idraulico e rubinetteria.

*Architectural details can be easily cut to accept any kind of plumbing fixtures.*



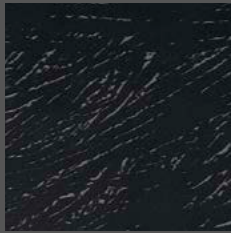






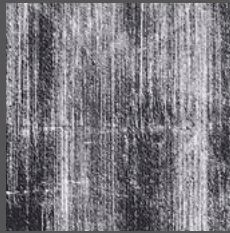
# GONIO DARK

## COLORI ED ELEMENTI UTILIZZATI NEL PATTERN *Pattern colors and dimensions*



Feather Black

A: 3PZ



Fuliggine

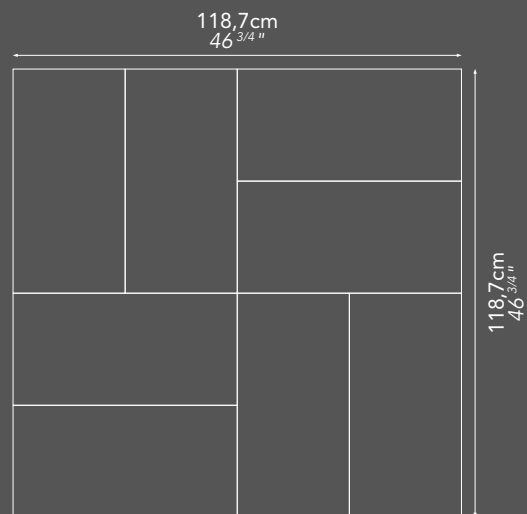
A: 3PZ



Tela Dark

A: 2PZ

96











98

2





1

99

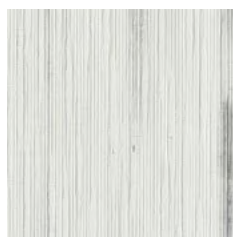
- 1 Gonio Dark
- 2 Tela Dark



# O **BIDOS GLACIAL**

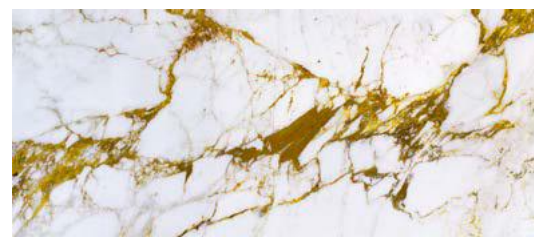
## **COLORIED ELEMENTI UTILIZZATI NEL PATTERN**

### *Pattern colors and dimensions*



Canapa Sutra Glacial

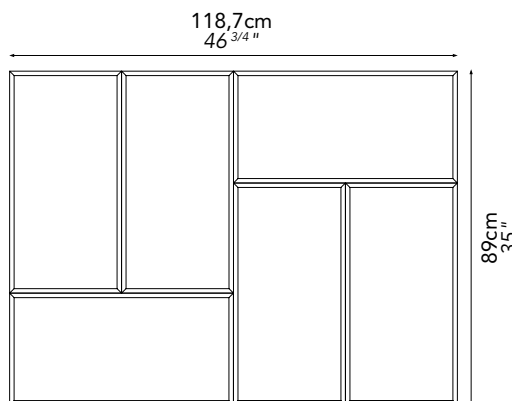
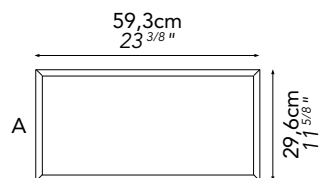
A: 6PZ



Vetrite Slab - Electric Marble Cal Gold

Su richiesta tutti i formati sono disponibili in versione bisellata.  
*All the formats are available either with beveled edges.*

100



Dettaglio bisellatura 12mm.  
*Detail beveled 1/2"*







101

Obidos Glacial











# MIX BADALING

## COLORI ED ELEMENTI UTILIZZATI NEL PATTERN

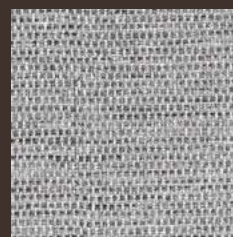
### *Pattern colors and dimensions*



Antique  
33,3 %

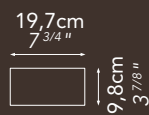


Plutone Taupe  
33,3 %



Tela Grey  
33,3 %

104









# MIX TALLIN

## COLORI ED ELEMENTI UTILIZZATI NEL PATTERN *Pattern colors and dimensions*



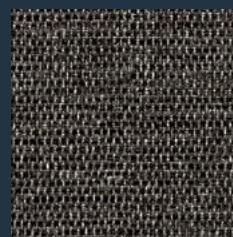
Peltro Mud

A: 33,3 %



Elephant Charcoal

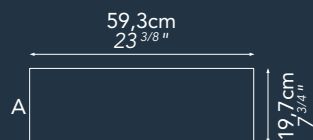
A: 33,3 %



Tela Dark

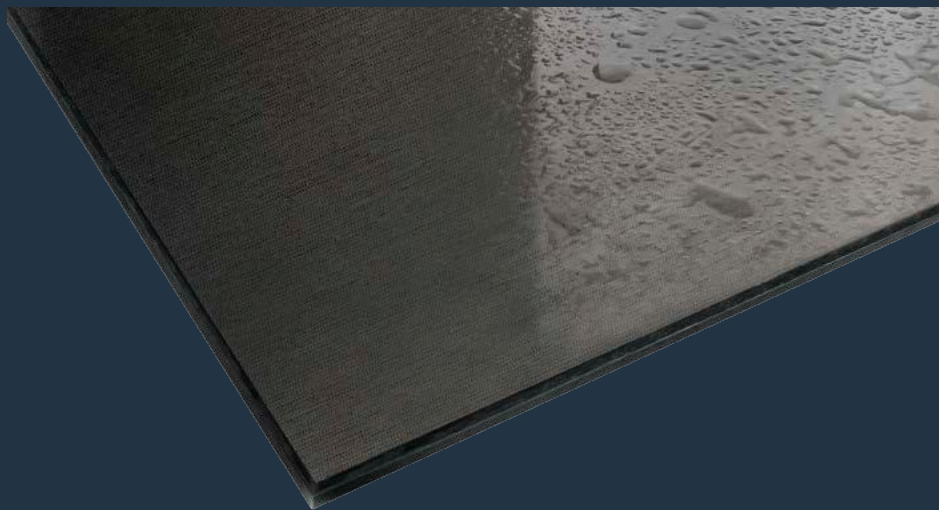
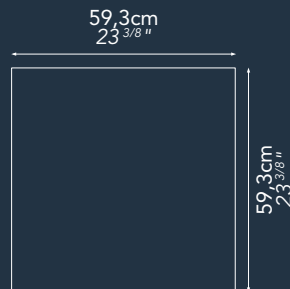
A: 33,3 %

106



Tela Dark

PAVIMENTO: Tela Dark Spessore 10mm  
FLOOR: Tela Dark Thickness 10mm



SisisGrip è un trattamento in fase produttiva volta a creare una superficie antiscivolo conforme con lo standard ANSI A137.1 per DCoF  
SisisGrip is a treatment during production that creates a slip resistance surface and complies with the ANSI A137.1 standard for DCoF





1

107

2

1 Mix Tallin

2 Tela Dark









1

109

2

1 Mix Tallin

2 Tela Dark



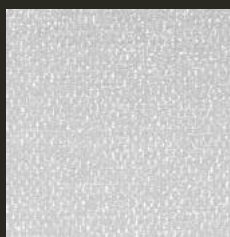
# TULUM NUDE

## COLORIED ELEMENTI UTILIZZATI NEL PATTERN *Pattern colors and dimensions*



Elephant Tortora

A: 1PZ  
B: 1PZ



Tela White

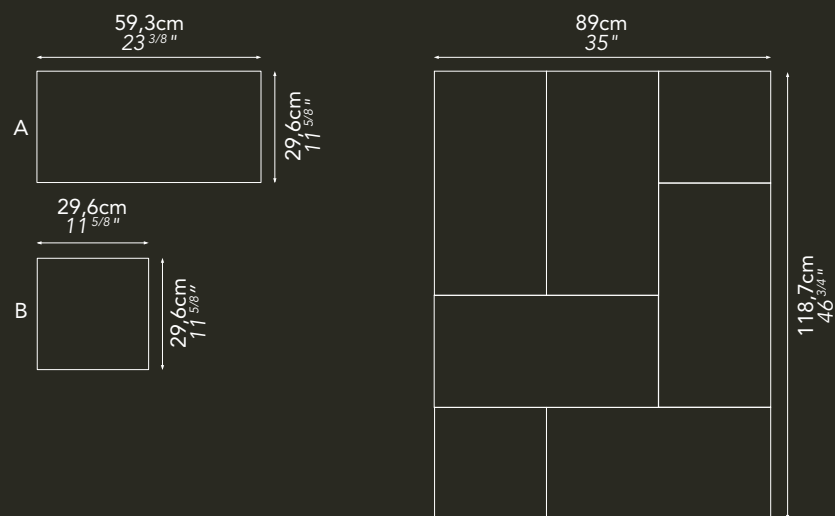
A: 2PZ  
B: 1PZ



Timber Glacial

A: 2PZ

110









2







1 Tulum Nude pag. 150

2 Tulum Elephant Charcoal pag. 150





- 1 Tulum Nude
- 2 Tulum Elephant Charcoal





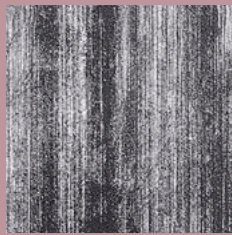
1

115

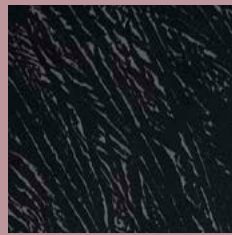


# FULIGGINE

## COLORI ED ELEMENTI UTILIZZATI NEL PATTERN *Pattern colors and dimensions*

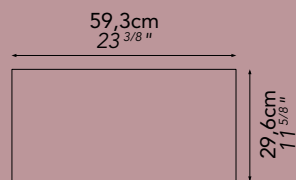


FuligGINE

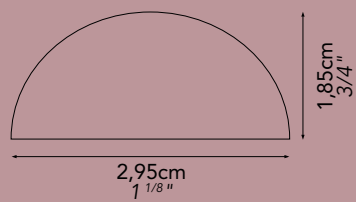


Feather Black

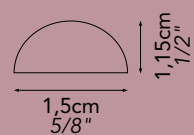
116



MOULDING MICENEA



MOULDING ROMANICA









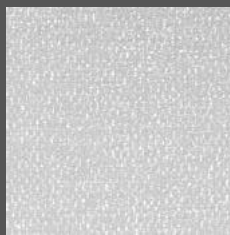
# A VILA WHITE

## COLORI ED ELEMENTI UTILIZZATI NEL PATTERN *Pattern colors and dimensions*



Timber Glacial

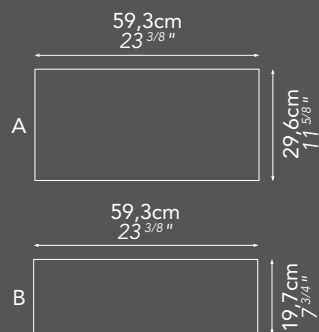
B: 1PZ



Tela White

A: 1PZ

118







119



120

1







121

2

1 Ávila White pag. 144

2 Ávila Timber Glacial pag. 144



# TIMBER GLACIAL

## COLORIED ELEMENTI UTILIZZATI NEL PATTERN *Pattern colors and dimensions*

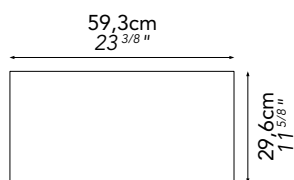


Timber Glacial



Bordure  
Pergamino Grey

122









# GAMMA COLORI

## *Colors Key*

---

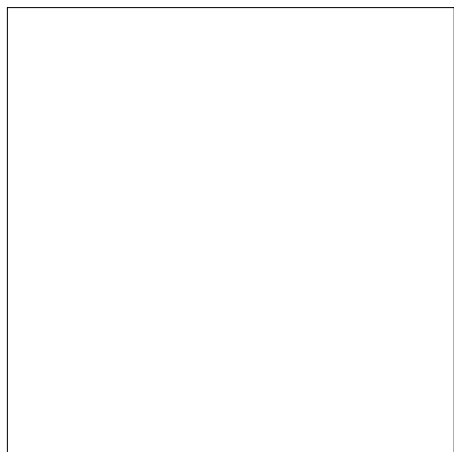
Satinatura disponibile su richiesta su tutta la gamma dei colori della Vetrite Tile con spessore 6 / 10 mm. ad eccezione delle lastre in Antique e Antique Blue.

I toni dei campioni sono da considerarsi indicativi.

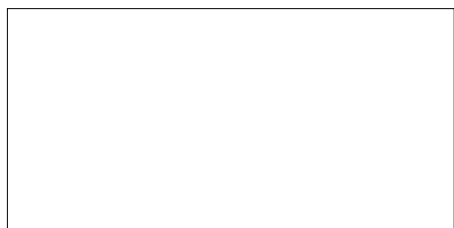
*Satin finish available on demand for the whole range of Vetrite Tile colors with thickness of 6 & 10 mm except the Antique and Antique Blue slabs.*

*Sample colours are considered indicative.*

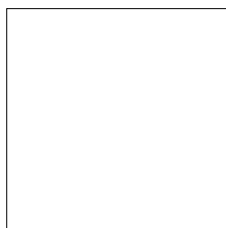
59,3x59,3cm /  $23^{3/8}$ "x $23^{3/8}$ "



29,6x59,3cm /  $11^{5/8}$ "x $23^{3/8}$ "



29,6x29,6cm /  $11^{5/8}$ "x $11^{5/8}$ "



19,7x59,3cm /  $7^{3/4}$ "x $23^{3/8}$ "



19,7x9,8cm /  $7^{3/4}$ "x $3^{7/8}$ "



29,6x89cm /  $11^{5/8}$ "x35"







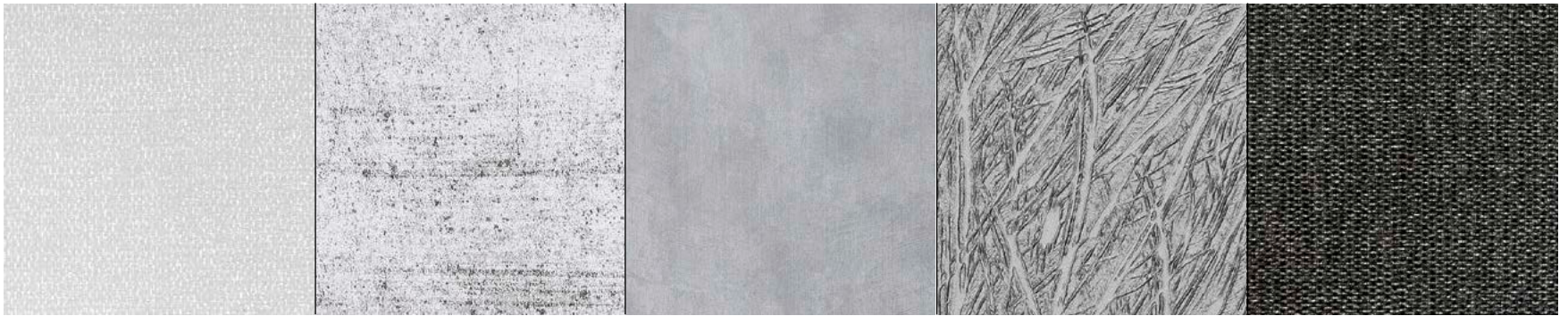
Elephant Panna

Corteza Glacial

Canapa Sutra Glacial

Timber Glacial

Antique



Tela White

Pergamino Grey

Eris Grey

Feather Grey

Tela Dark



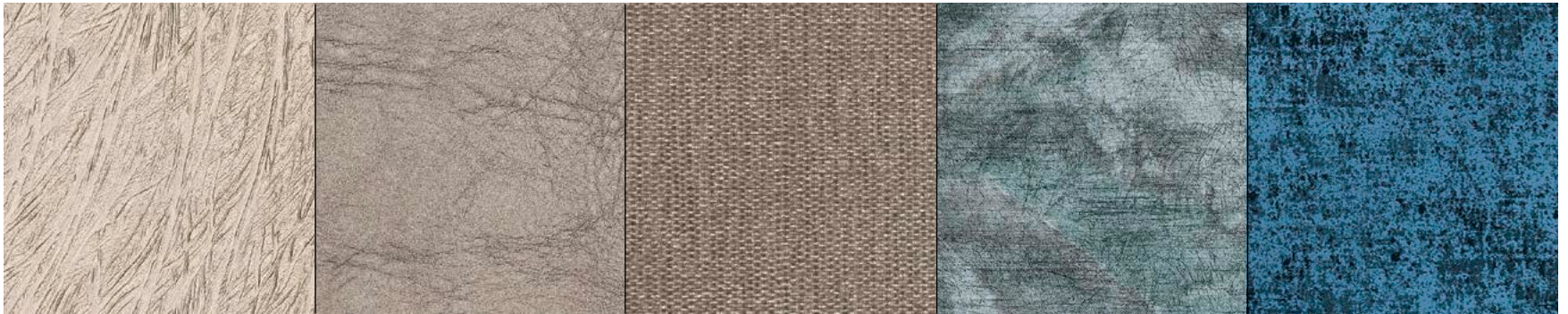
Suede Cream

Tela Grey

Plutone Taupe

Iguana Tortora

Fuliggine



Feather Cipria

Elephant Tortora

Tela Brown

Peltro Mud

Antique Blu



Sulphur Tortora

Efestò Green

Bohème Grey

Elephant Charcoal

Feather Black



# GAMMA COLORI

## *Colors Key*

---

Satinatura disponibile su richiesta su tutta la gamma dei colori della Vetrite Tile con spessore 6 / 10 mm. ad eccezione delle lastre in Antique e Antique Blue.

I toni dei campioni sono da considerarsi indicativi.

*Satin finish available on demand for the whole range of Vetrite Tile colors with thickness of 6 & 10 mm except the Antique and Antique Blue slabs.*

*Sample colours are considered indicative.*





TIMBER GLACIAL SATIN

TIMBER GLACIAL



# F INITURE Finishes

Satinatura disponibile su richiesta su tutta la gamma dei colori della Vetrite Tile con spessore 6 / 10 mm. ad eccezione delle lastre in Antique e Antique Blue.

*Satin finish available on demand for the whole range of Vetrite Tile colors with thickness of 6 & 10 mm except the Antique and Antique Blue slabs.*

128

2 TELA GREY SATIN

1 TELA GREY



**2** PELTRO MUD SATIN

**1** PELTRO MUD

**2** SUEDE CREAM SATIN

129

**1** SUEDE CREAM

**1** PERGAMINO GREY

**2** PERGAMINO GREY SATIN



# D

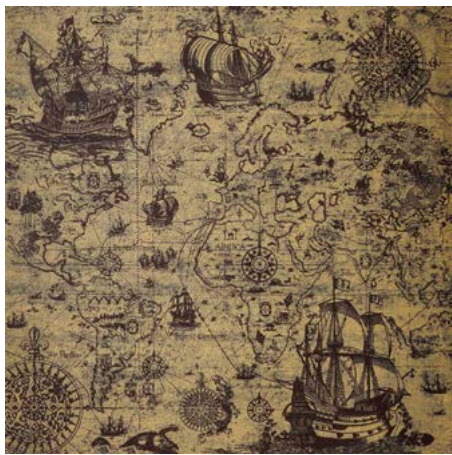
## ECORATI

### *Prints*

---

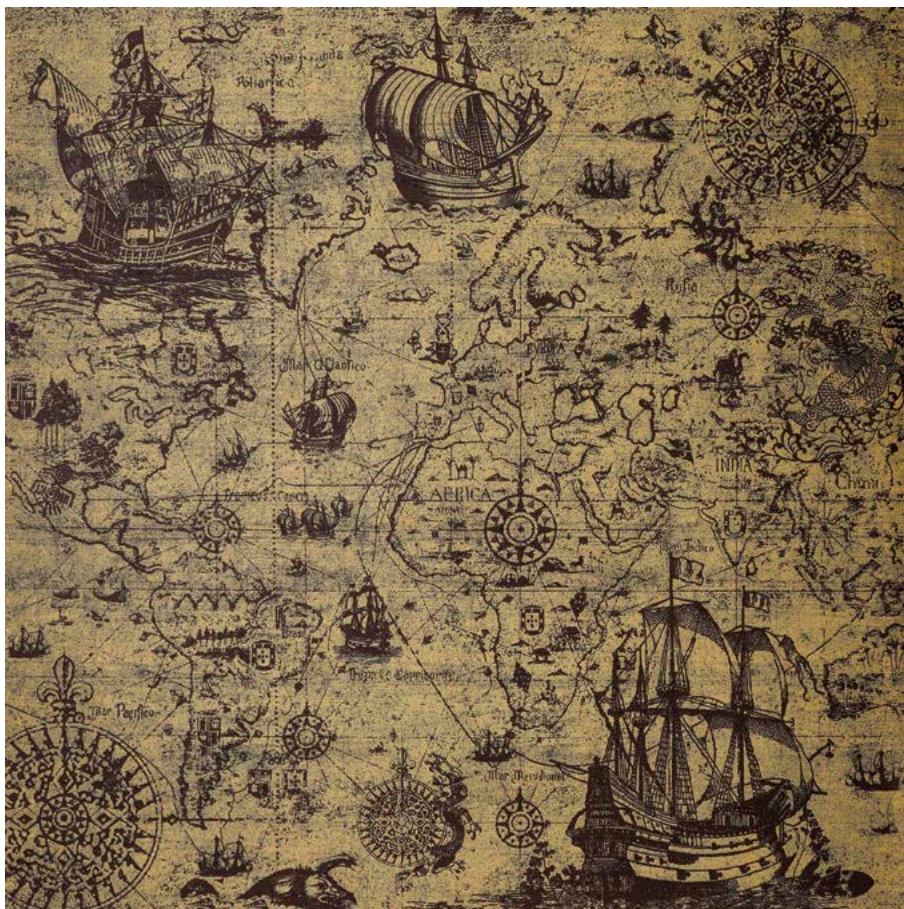
I toni dei campioni sono da considerarsi indicativi.  
*Sample colours are considered indicative.*

59,3x59,3cm / 23<sup>3/8</sup>"x23<sup>3/8</sup>"



130

120 x120cm / 47<sup>1/4</sup>"x47<sup>1/4</sup>"









# **D**ECORATI *Prints*

132











134



I toni dei campioni sono da considerarsi indicativi.  
*Sample colours are considered indicative.*



Ricordo Black Ele / Panna

Ricordo Black Per / Grey

Ricordo Blu Per / Grey

Ricordo White Ele / Torotra



Bucolico Black Bo / Grey

Bucolico Black Tela / Grey

Bucolico White Per / Grey



Atlas Black Per / Grey

Atlas Seppia Per / Gold



# LISTELLI

## *Mouldings*

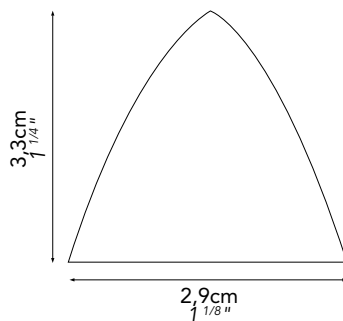
---

136

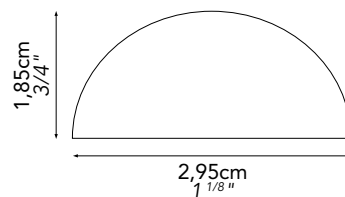


Lunghezza 60 cm  
Length 23 <sup>5</sup>/<sub>8</sub> "

SUMERICA



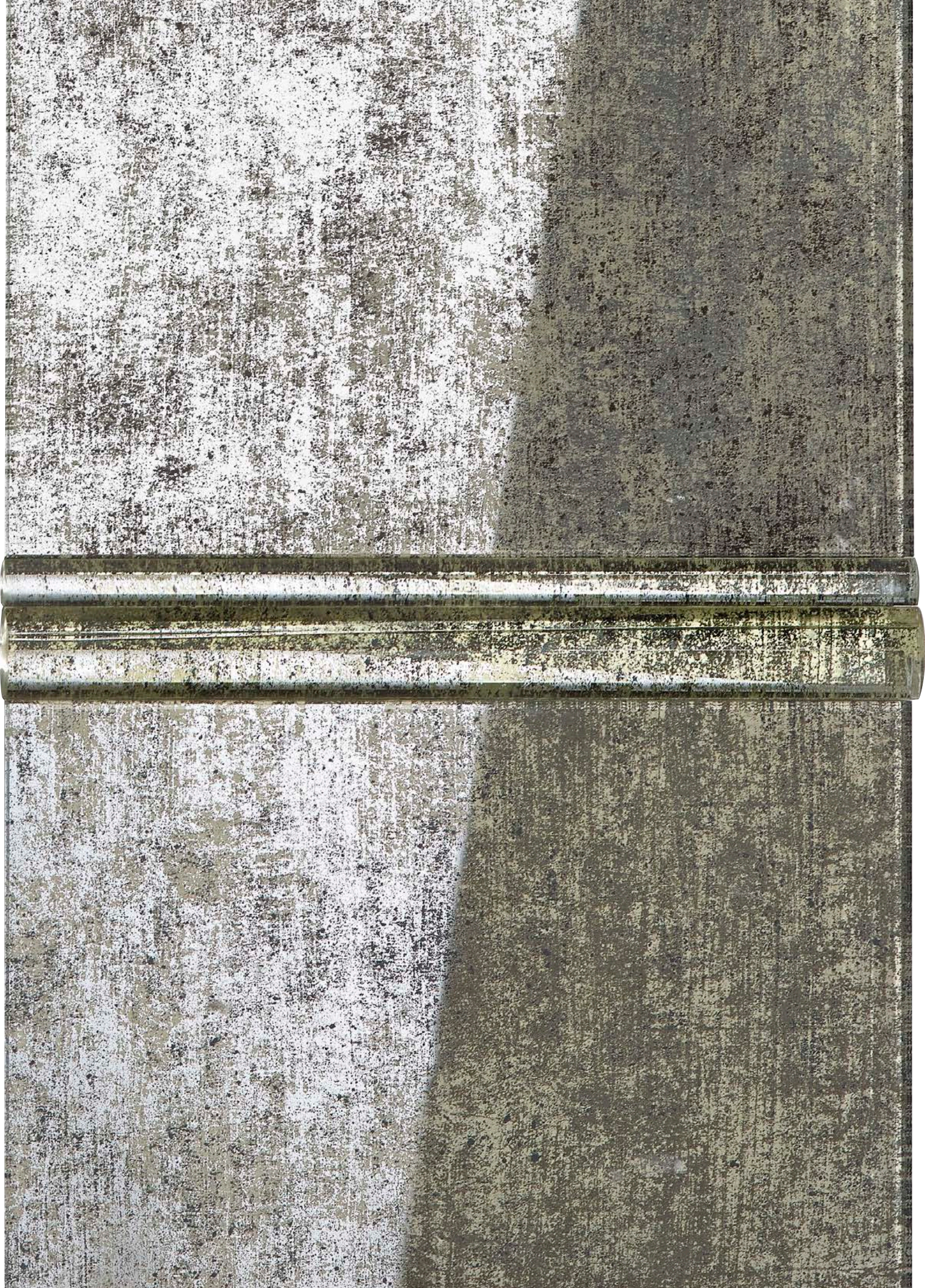
MICENEA



ROMANICA







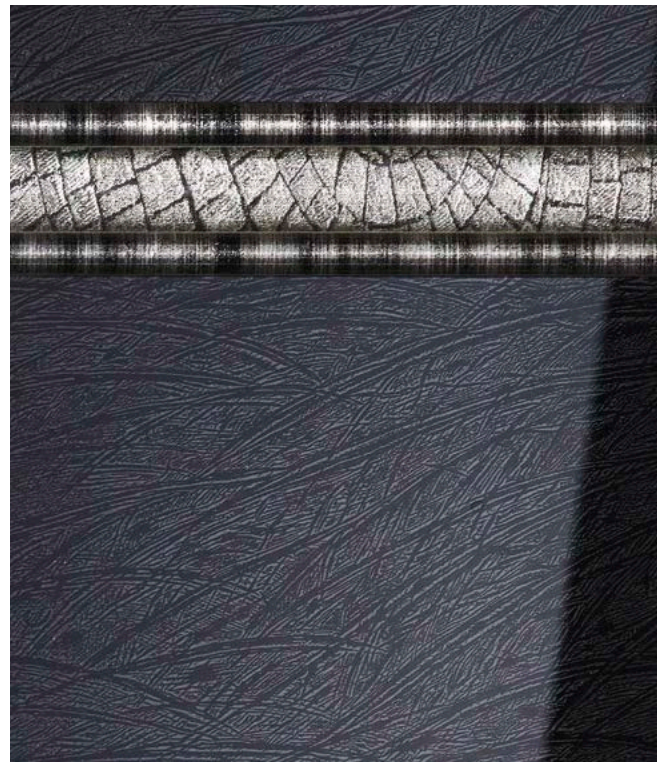


# P

## ROPOSTE ABBINAMENTI

### *Coordinating Trims*

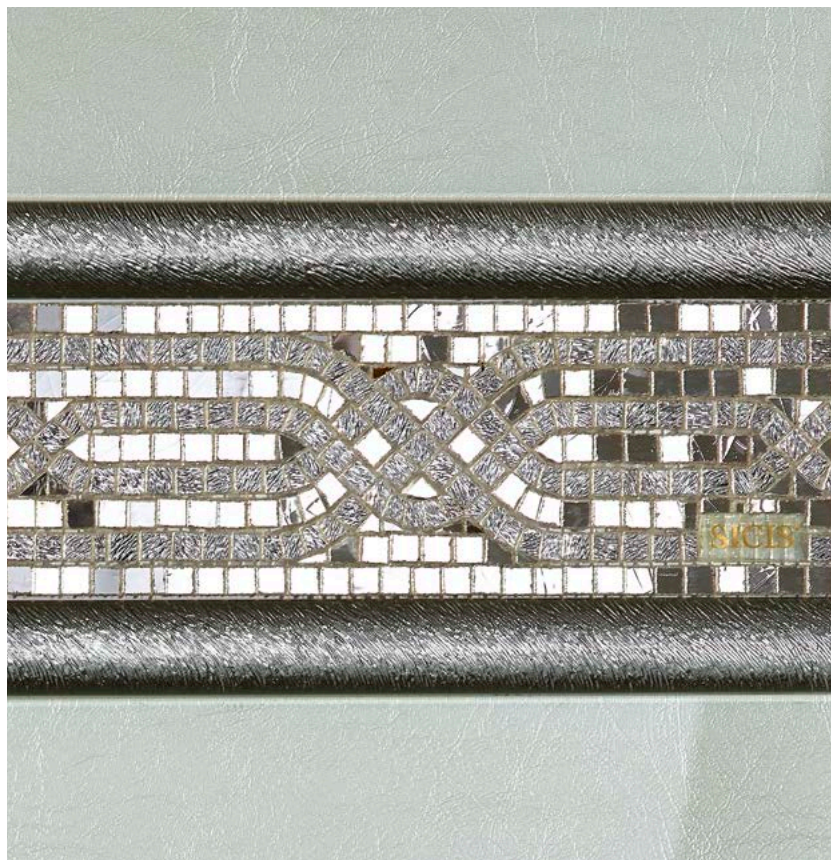
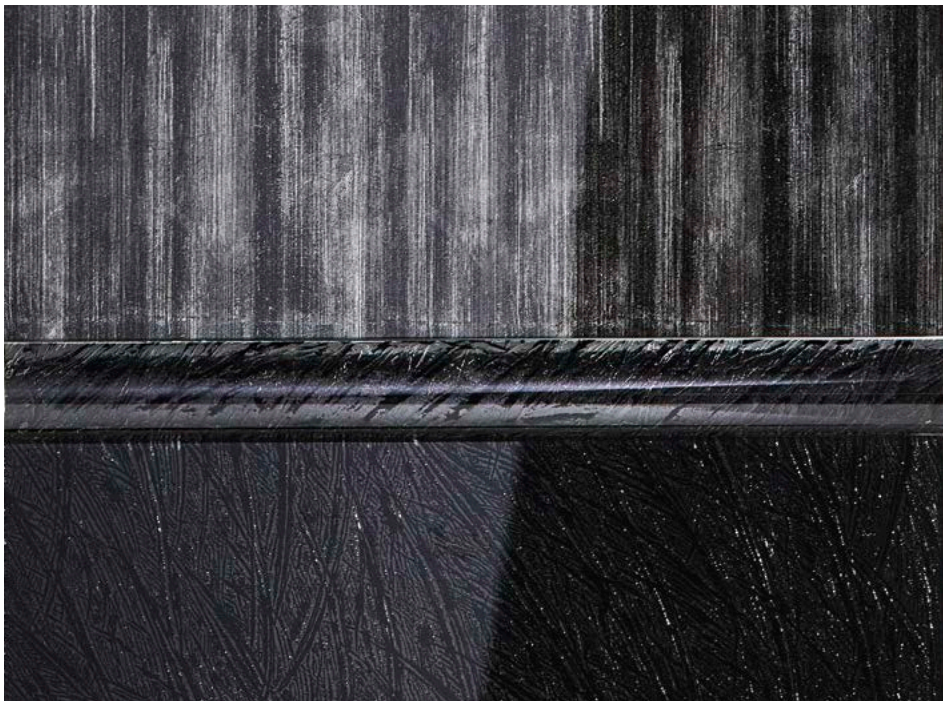
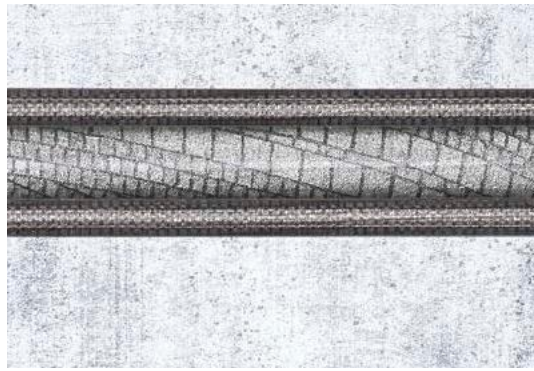
---



138









# A

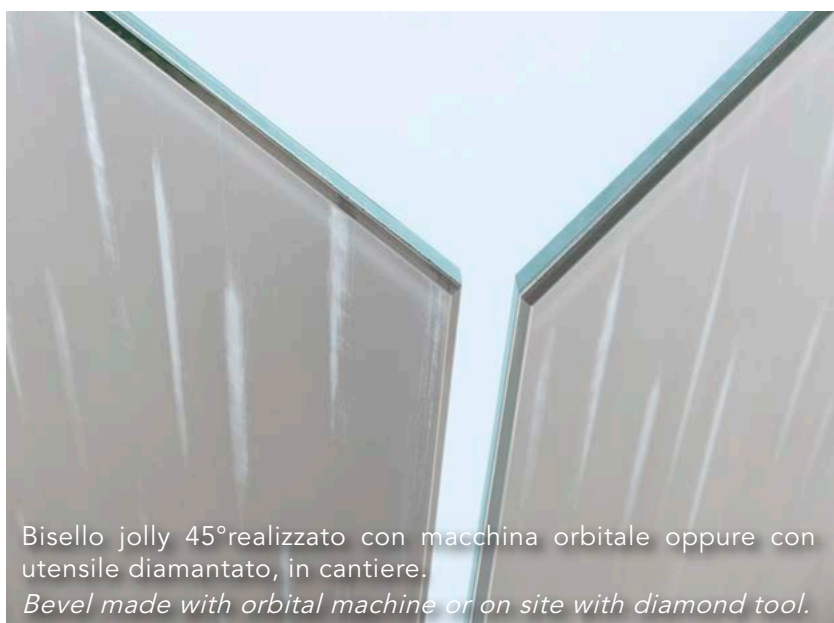
## PPPLICAZIONI / UTILIZZI

### *Applications / Usages*

---

Dettagli Architettonici: questo materiale ha un'incredibile facilità di taglio per inserire qualunque tipo di installazione.  
Su richiesta tutti i formati sono disponibili in versione bisellata.  
*Architectural details can be easily cut to accept any kind of fixtures.  
All the formats are available either with beveled edges.*

140



Bisello jolly 45°realizzato con macchina orbitale oppure con utensile diamantato, in cantiere.  
*Bevel made with orbital machine or on site with diamond tool.*



Bisello filo lucido con angolo circolare realizzato con utensile.  
*Round glossy bevel cut with diamond tool.*



Bisello/Diamante (a macchina).  
*Diamond bevel by machine.*



Bisello jolly 45°realizzato con macchina orbitale oppure con utensile diamantato, in cantiere.  
*Bevel made with orbital machine or on site with diamond tool.*

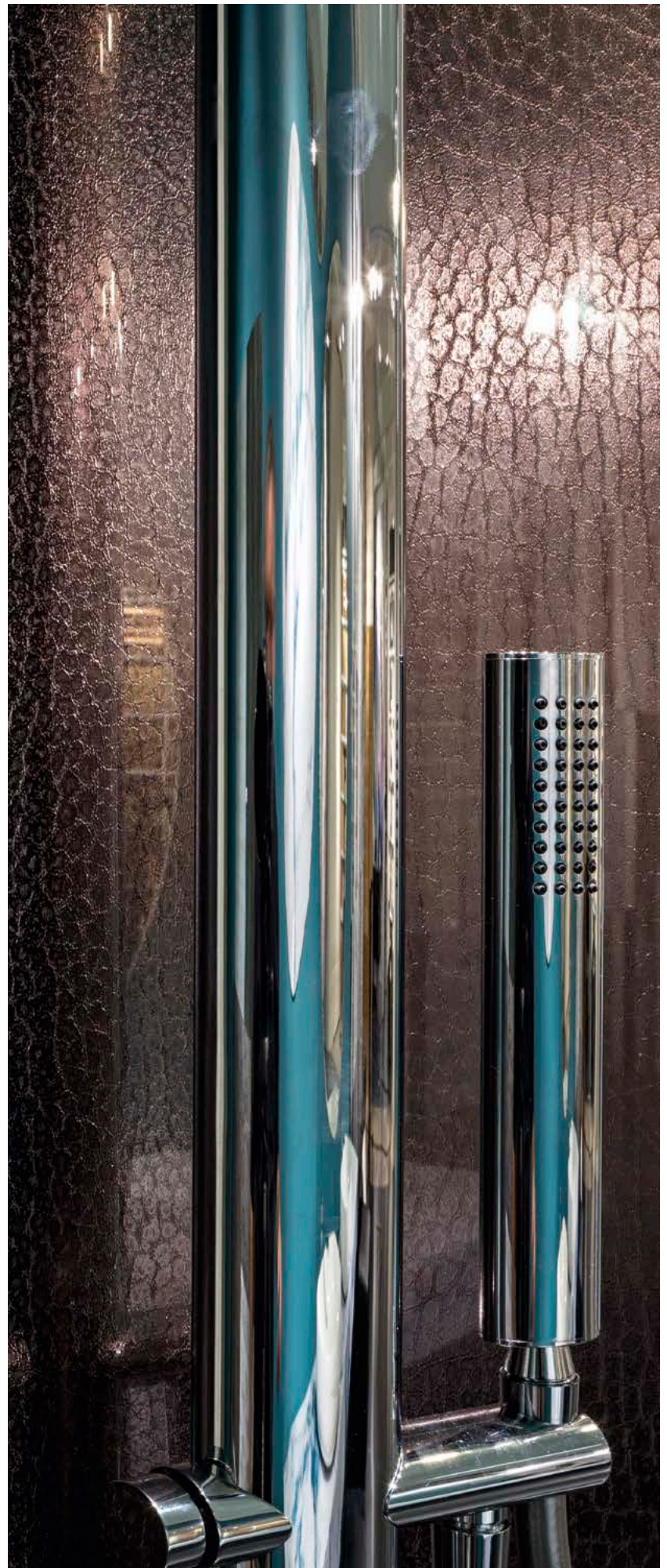




Bisello/Diamante (a macchina).  
*Diamond bevel by machine.*



Foro con macchina waterjet o trapano a tazza in cantiere.  
*Hole with waterjet machine or drill cup on site.*







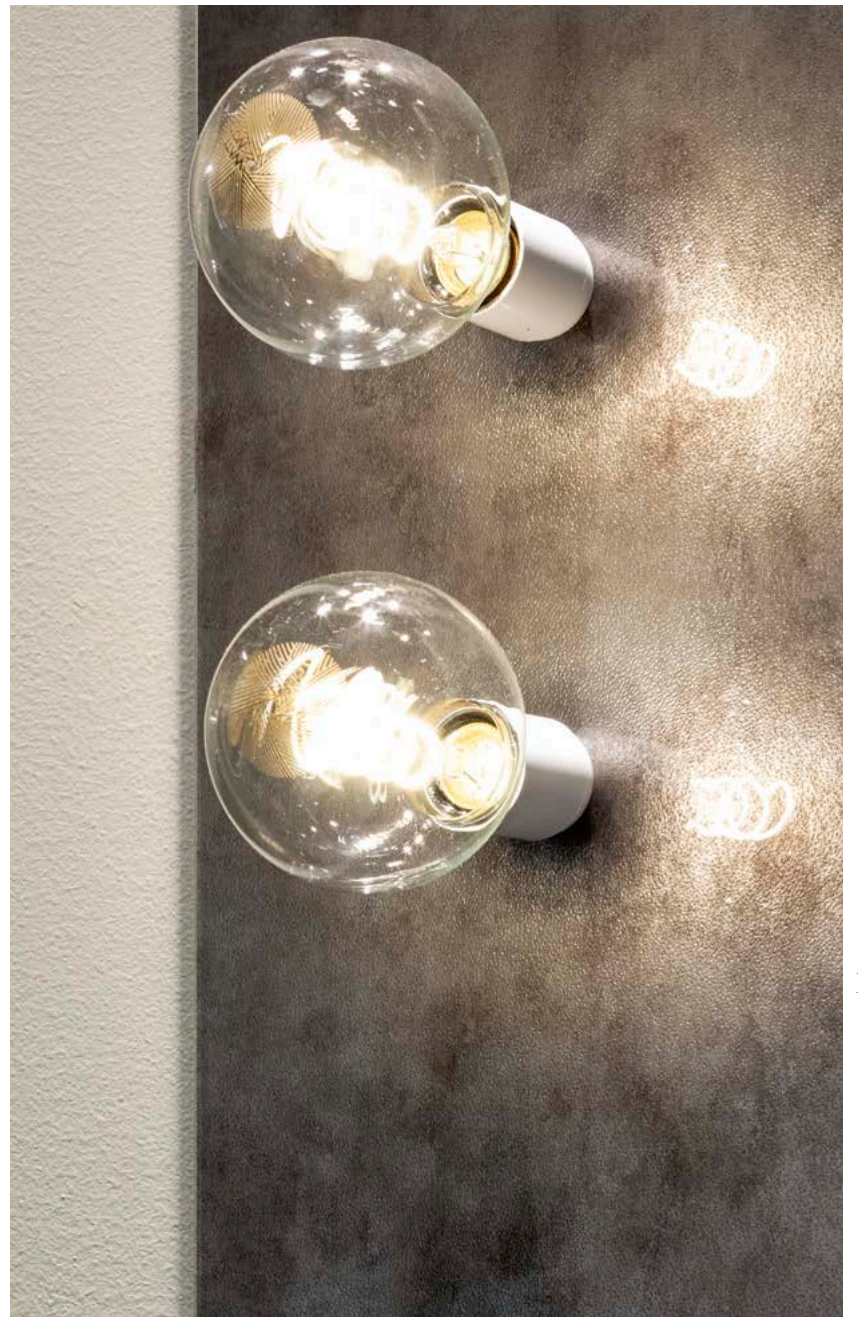
Presse per luce o per computer.  
*Electric socket.*







Presse per luce o per computer.  
*Electric socket.*



Foro con macchina waterjet o trapano a tazza in cantiere.  
*Hole with waterjet machine or drill cup on site.*



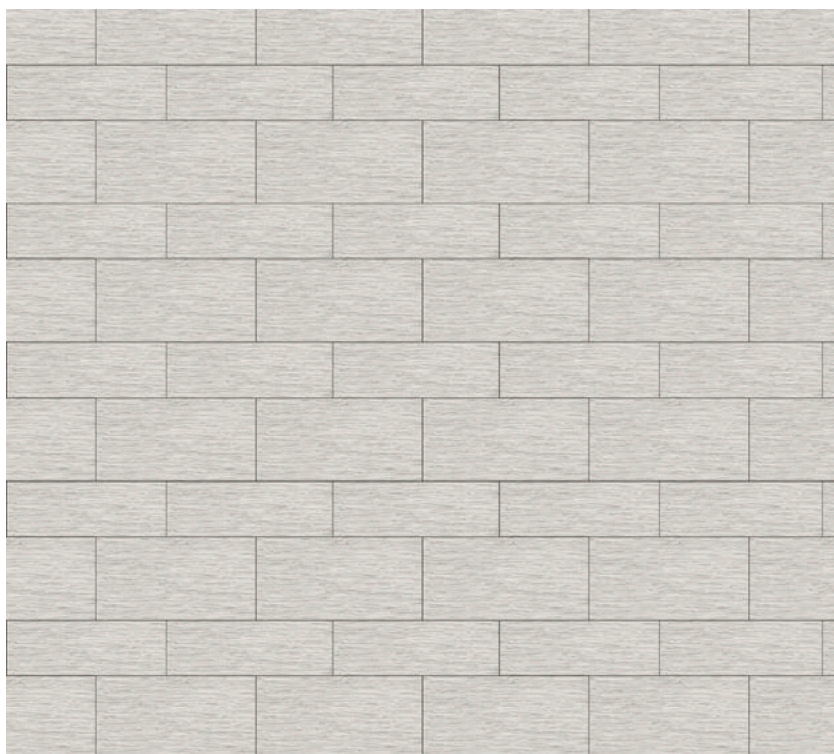
# **L**INDICE PATTERN *Pattern Index*

---

I toni dei campioni sono da considerarsi indicativi.  
*Sample colours are considered indicative.*

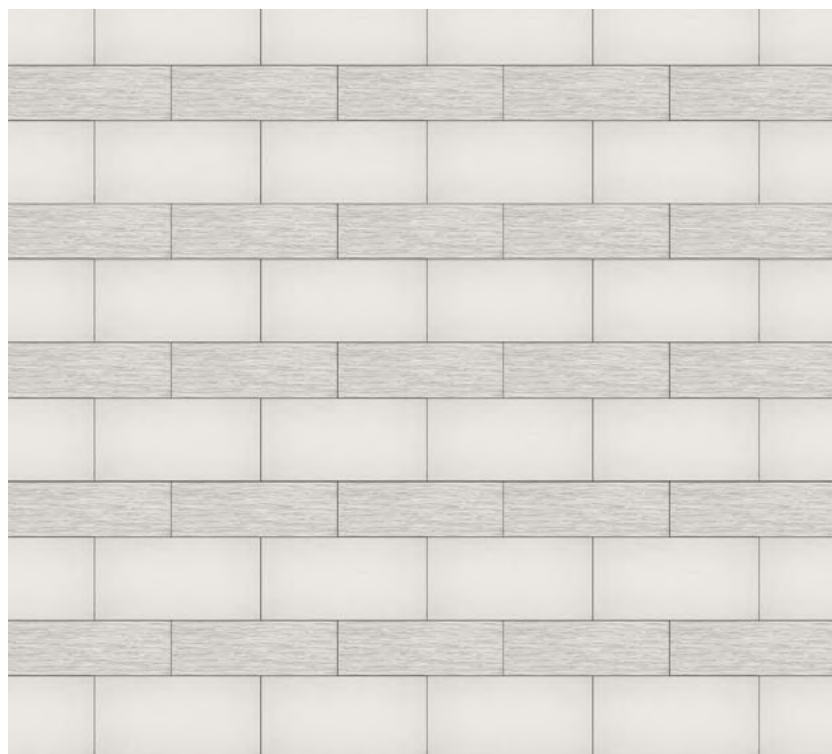
144

## **Ávila Timber Glacial** pag 118



Timber Glacial

## **Ávila White** pag 118



Timber Glacial / Tela White



## Camelot Classic pag 54



Tela White / Corteza Glacial / Feather Black / Fuligine

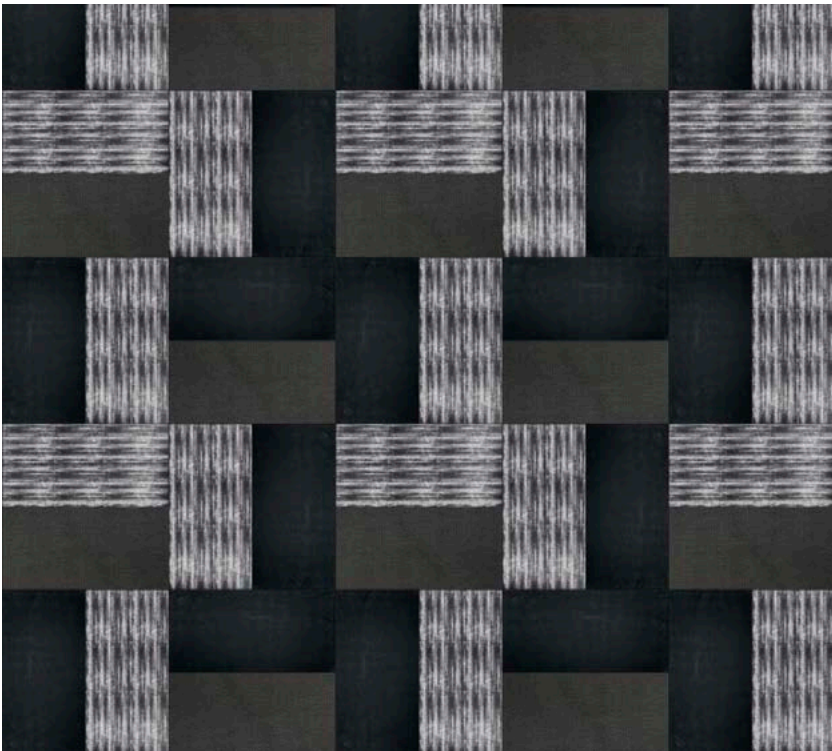
## Copán Efesto Green pag 50



Efesto Green

145

## Gonio Dark pag 96



Feather Black / Fuligine / Tela Dark

## Ipostilo Glacial pag 60



Elephant Panna / Corteza Glacial / Tela Grey



## Izmir Charcoal pag 82



Iguana Tortora / Tela Brown / Elephant Charcoal

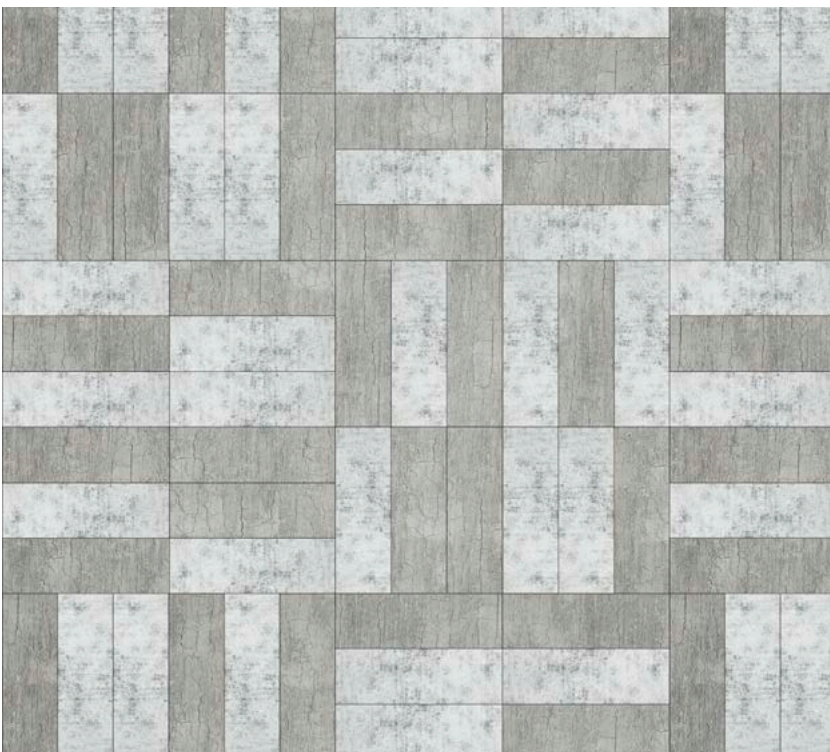
## Kelasuri Tortora pag 40



Elephant Tortora / Sulphur Tortora / Feather Cipria

146

## Lhasa Glacial pag 46



Corteza Glacial / Antique

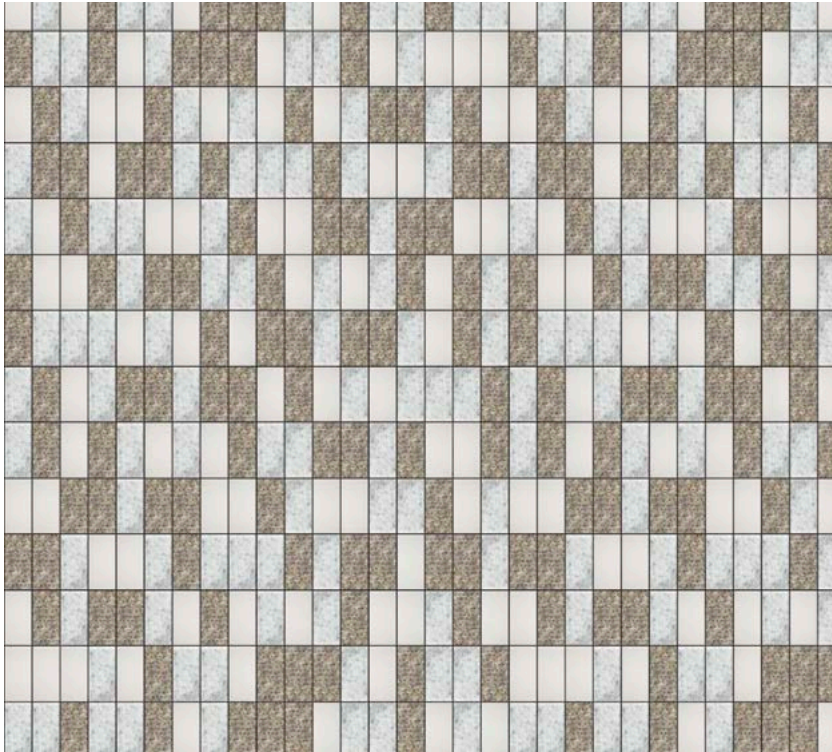
## Megalito Green pag 76



Efesto Green / Elephant Charcoal / Suede Cream

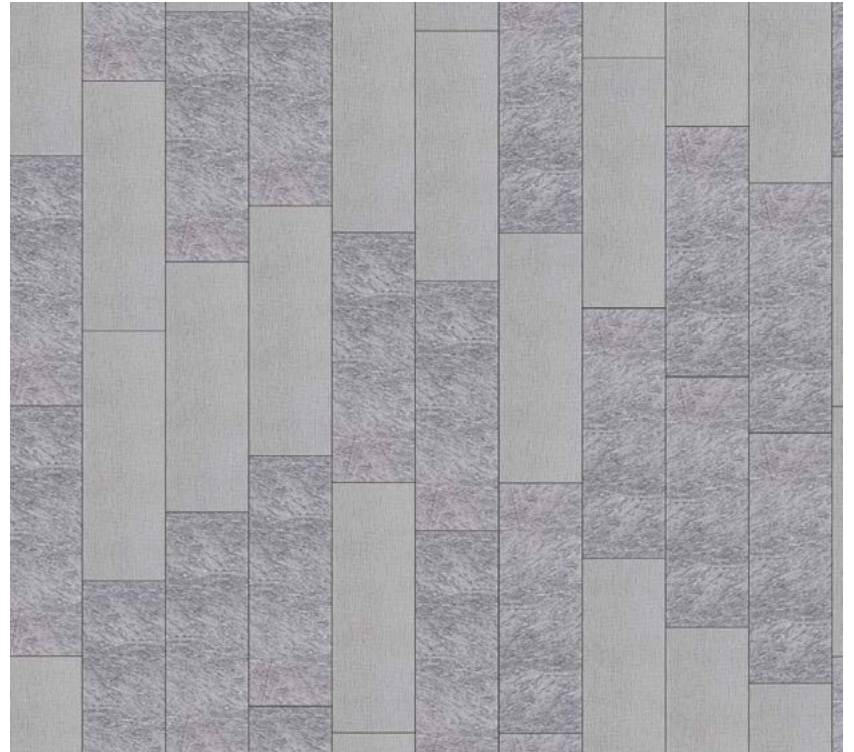


## Mix Badaling pag 104



Antique / Plutone Taupe / Tela Grey

## Mix Cyclopean pag 86



Tela Grey / Feather Grey

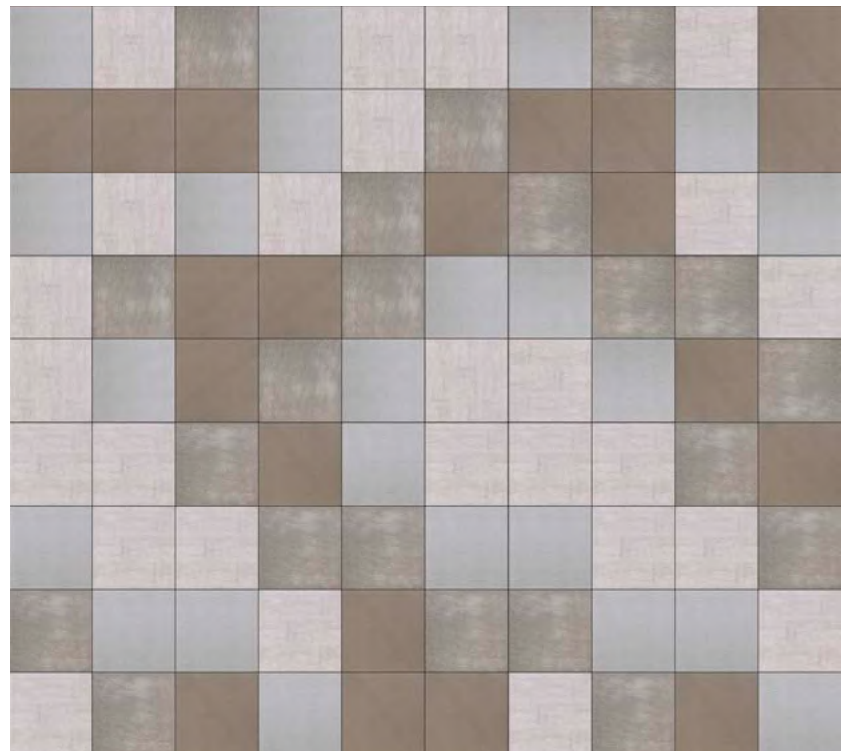
147

## Mix Tallin pag 106



Peltro Mud / Elephant Charcoal / Tela Dark

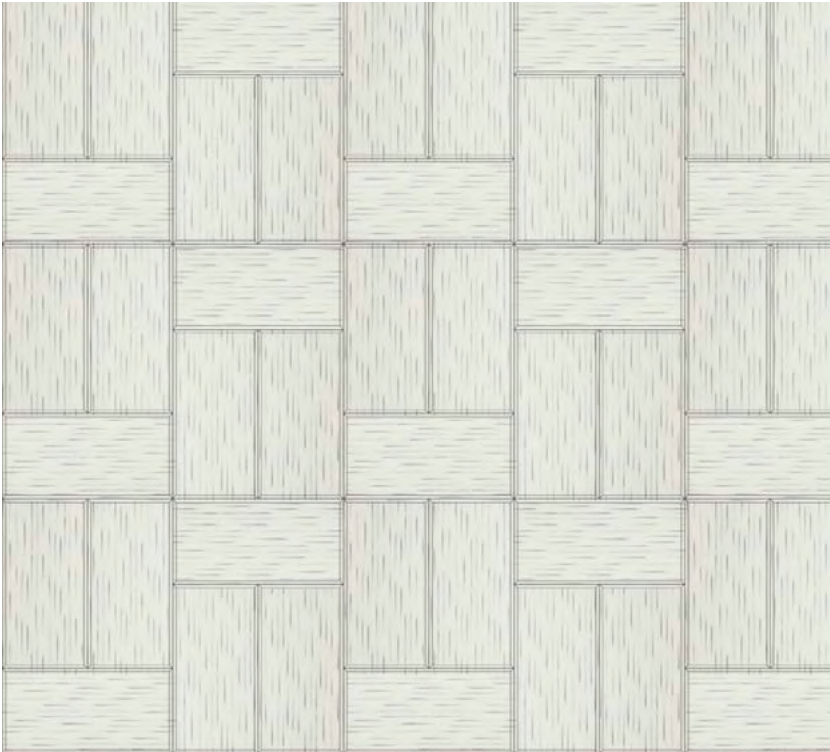
## Mix Visby pag 90



Tela Brown / Tela Grey / Elephant Tortora / Iguana Tortora



## Obidos Glacial pag 100



Canapa Sutra Glacial

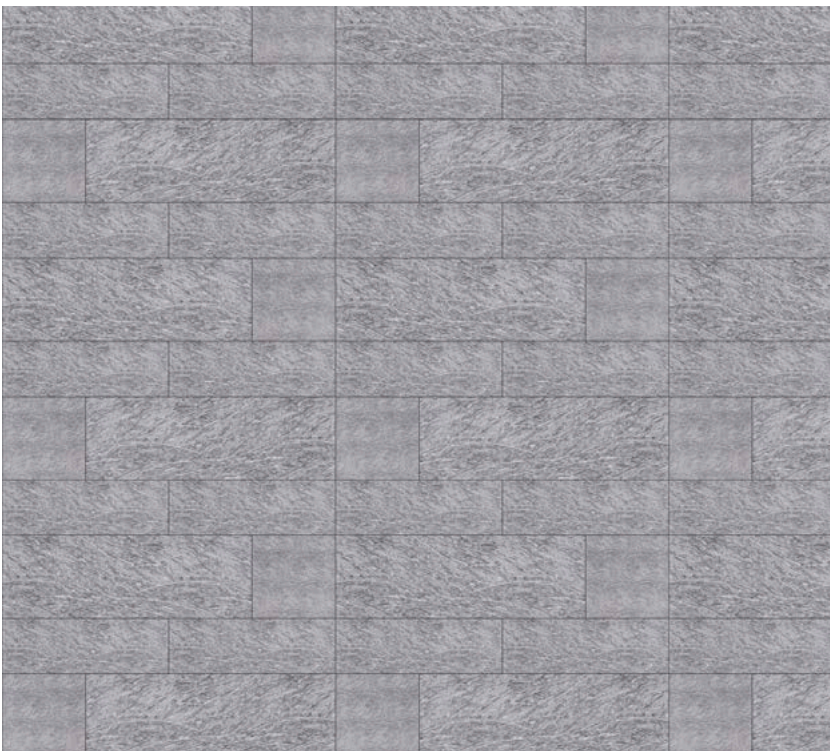
## Pisac Tobacco pag 14



Boheme Grey / Feather Grey / Feather Cipria

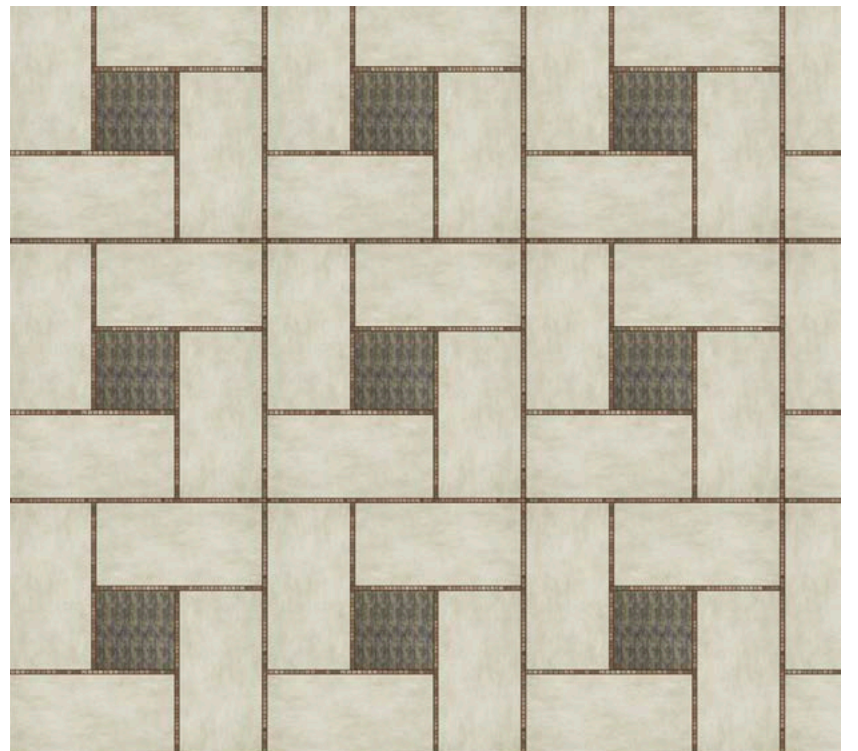
148

## Pisac Feather Grey pag 14



Feather Grey

## Simatai Cream pag 72



Suede Cream / Sulphur Tortora / Vis Two Mosaic

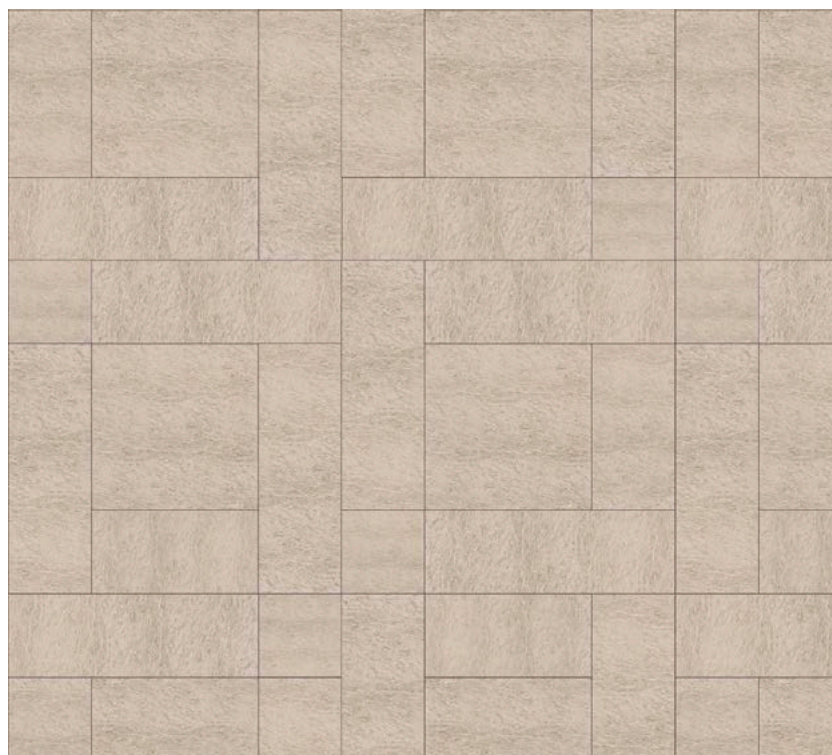


## Tipón Tortora pag 26



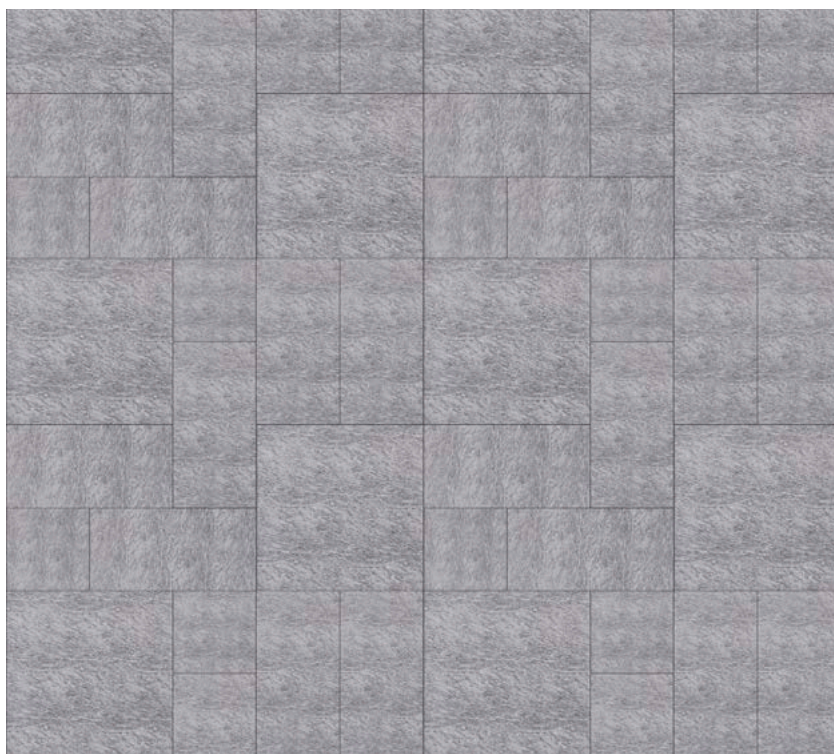
Feather Cipria / Elephant Charcoal / Suede Cream / Sulphur Tortora

## Tipón Feather Cipria pag 26



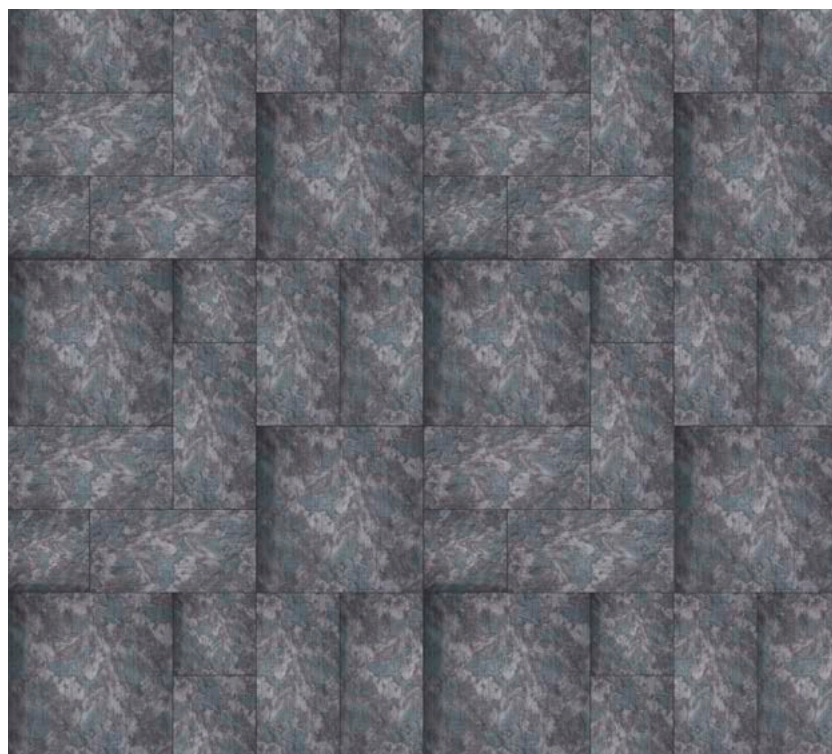
Feather Cipria

## Troy Feather Grey pag 22



Feather Grey

## Troy Peltro Mud pag 22



Peltro Mud

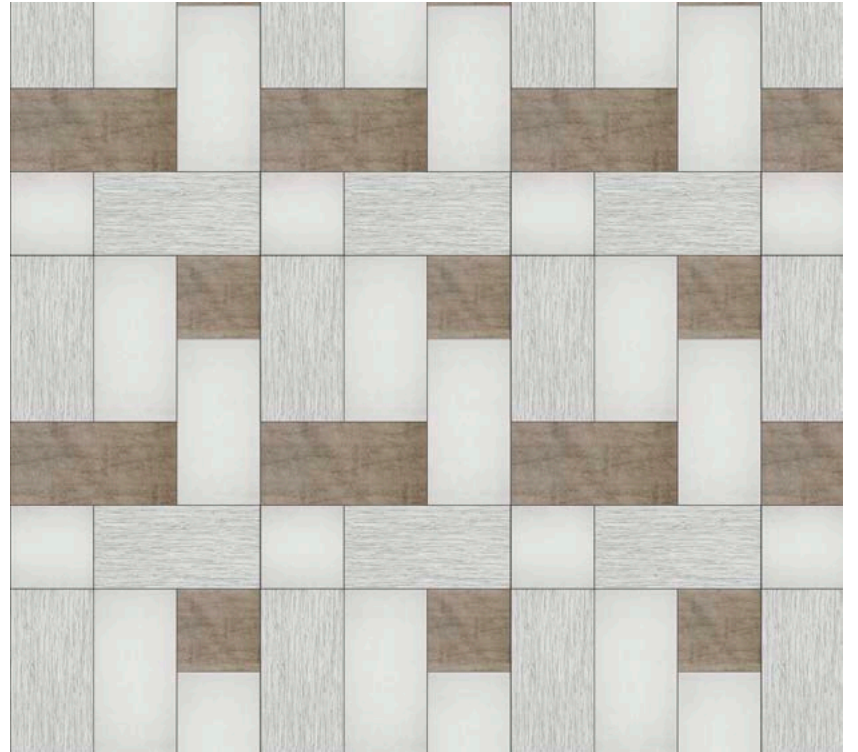


## Troy Tela White pag 22



Tela White

## Tulum Nude pag 110



Elephant Tortora / Tela White / Timber Glacial

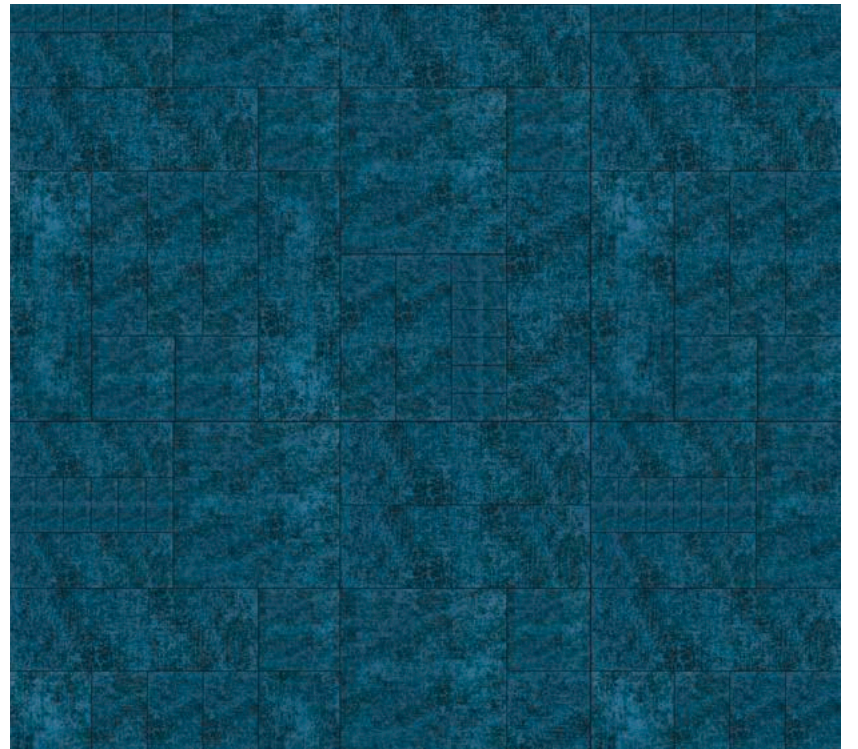
150

## Tulum Elephant Charcoal pag 110



Elephant Charcoal

## Ugarit Antique Blue pag 36



Antique Blue





151



# CARATTERISTICHE TECNICHE

## *Technical Characteristics*

---

### DESCRIZIONE TECNICA DI VETRITE TILE

Vetro tecnico decorativo, ottenuto mediante la combinazione di polimeri in fase liquida, lamine metalliche e fibre tessili. Vetro composito versatile ad elevata tecnologia in grado di soddisfare i requisiti estetici, tecnici e ambientali più ambiziosi. Spessori 6 mm - su richiesta per applicazioni speciali può variare da 4 a 12 mm. Per uso a pavimento si consiglia lo spessore da 10 mm. con finitura SICISgrip\*.

### TECHNICAL DESCRIPTION OF VETRITE TILE

*Thin glass slabs in large format made with an array of polymer films, thermofoil, metal foils or fiber textiles. Highly technical characteristics allowing for a multitude of applications. Thickness 6 mm – for special applications thickness from 4 to 12mm can also be available.*

**152** *For floor applications we suggest 10 mm thick with SICISgrip\* treatment.*

### VETRITE TILE E AMBIENTE

La versatilità della tecnologia Vetrite Tile consente, su richiesta, di fornire il prodotto anche partendo da vetri speciali pretrattati quali autopulenti, antibatterici etc...

I vetri speciali a pulizia facilitata sono caratterizzati da uno strato sottile e trasparente che ha proprietà fotocatalitiche e idrofile molto efficaci nel mantenere pulita la superficie. Lo strato fotocatalitico utilizza la doppia azione dei raggi UV della luce solare e dell'acqua per rimuovere lo sporco che si accumula sulla superficie del vetro.

### VETRITE TILE AND ENVIRONMENT

*On request, Vetrite Tile can be produced pretreated with a self-cleaning and antibacterial surface. This easy to clean treatment is characterized by a thin, transparent layer that has hydrophilic and photocatalytic properties which are very effective in maintaining a clean surface. The photocatalytic layer uses double action from UV rays from the sun and water to remove dirt that accumulates on the glass surface.*

### VALUTAZIONE DELLA QUALITÀ

#### Metodi di ispezione

Vetrite Tile deve essere osservata in una posizione verticale, ad occhio nudo e in normali condizioni di luce diffusa (naturale o artificiale, tra 300 lx e 600 lx), da una distanza di 1 m.

La direzione di osservazione è normale, cioè perpendicolarmente, alla lastra di vetro. L'uso di una fonte di illuminazione aggiuntiva, ad esempio riflettori, non è permesso.

### QUALITY EVALUATION

#### Handling and Inspection

*Vetrite Tile shall be inspected in a vertical position, with the naked eye and under normal diffused lighting conditions such as daylight (between 300lx and 600lx) from a distance of 1 m.*

*The use of additional lighting sources and/or spotlights is not acceptable.*



## FISSAGGIO DI VETRITE TILE - RIFERIRSI AL MANUALE DI POSA

L'installazione e la pulizia di Vetrite Tile devono essere idonei all'ambiente di destinazione.

Vetrite Tile può essere danneggiato, questo dipenderà in larga misura dall'ambiente in cui viene utilizzato.

Devono sempre essere considerate le seguenti raccomandazioni:

- I materiali di fissaggio utilizzati non devono essere di natura aggressiva.
- Quando Vetrite Tile viene inserito in profili, i bordi possono essere danneggiati da condensazione, agenti chimici (detergenti, ecc) che possono rimanere all'interno del profilo.
- La superficie e la massa del materiale del substrato a cui Vetrite Tile è fissato deve essere pulito, asciutto, privo di umidità, acidi, alcali e altri materiali aggressivi.
- Le istruzioni del produttore di adesivi, devono essere sempre seguite.
- Tutti gli adesivi e prodotti utilizzati devono essere compatibili con Vetrite Tile.
- La selezione e l'applicazione di adesivi/prodotti chimici, insieme con la scelta del substrato e preparazione per il fissaggio Vetrite Tile, è esclusivamente a discrezione e responsabilità dell'installatore.
- La selezione del detergente per la pulizia di Vetrite Tile, in base alla destinazione d'uso, è esclusivamente a discrezione e responsabilità dell'installatore.
- Sicis è disponibile ad assistere e suggerire gli installatori.
- Per i colori Antique e Antique Blue è necessario seguire le avvertenze di posa della collezione Colibri e ColibriTide presenti a pag 7 del Manuale di Posa SICIS Rev 8 Dic 2016.

## INSTALLATION OF VETRITE TILE - REFER TO THE INSTALLATION MANUAL

*General recommendations:*

*- Vetrite Tile should be used in suitable environments and should be cleaned and maintained per suggestions.*

*- Vetrite Tile material should be handled with care.*

*- The Vetrite Tile should be clean, dry, free of humidity, acid, alkali and any other aggressive chemicals like cleaning agents when installing and also when using profiles.*

*- Recommended manufacturer's adhesives should be strictly observed.*

*- All adhesives and chemicals used should be compatible with Vetrite Tile.*

*- The selection and application of adhesives and chemicals, along with the choice of the substrate and preparation for installing Vetrite Tile, is solely **153** at the discretion and risk of the installer.*

*- Sicis is available for any assistance and suggestions.*

*- For the following colors Antique and Antique Blue see our installation manual Colibri, ColibriTide section, pag.7 Rev 8 Dic 2016.*

## PULIZIA E MANUTENZIONE

Un'accurata e regolare operazione di pulizia non solo preserva le qualità estetiche delle superfici, ma ne mantiene anche inalterate le caratteristiche, asportando polvere e depositi aggressivi.

Le operazioni di pulizia devono essere eseguite manualmente o con idonea attrezzatura dall'alto verso il basso.

Vetrite Tile Collection è realizzata con diversi materiali con differenti caratteristiche e resistenze.

Si raccomanda in ogni caso di fare preventivamente un test di pulizia su una porzione limitata della superficie da trattare per verificare la compatibilità del detergente.

Non spruzzare il detergente direttamente sulla superficie del materiale, ma sul panno morbido e pulito.

Non utilizzare detergenti abrasivi e aggressivi.

## CLEANING AND MAINTENANCE

*A thorough and regular cleaning not only guarantees the exterior finish of the surface but also preserves its quality by removing dust and aggressive deposits. Cleaning operations must be done manually or by using suitable cleaning equipment from top to bottom.*

*Vetrite Tile Collection is made by several materials with different properties and resistances.*

*We recommend you to first try the cleaning product on a small portion of surface so to make sure that it will not be affected.*

*Do not spray the cleaning product directly to the surface but on a soft cleaning cloth.*

*Do not use abrasive or aggressive agents.*

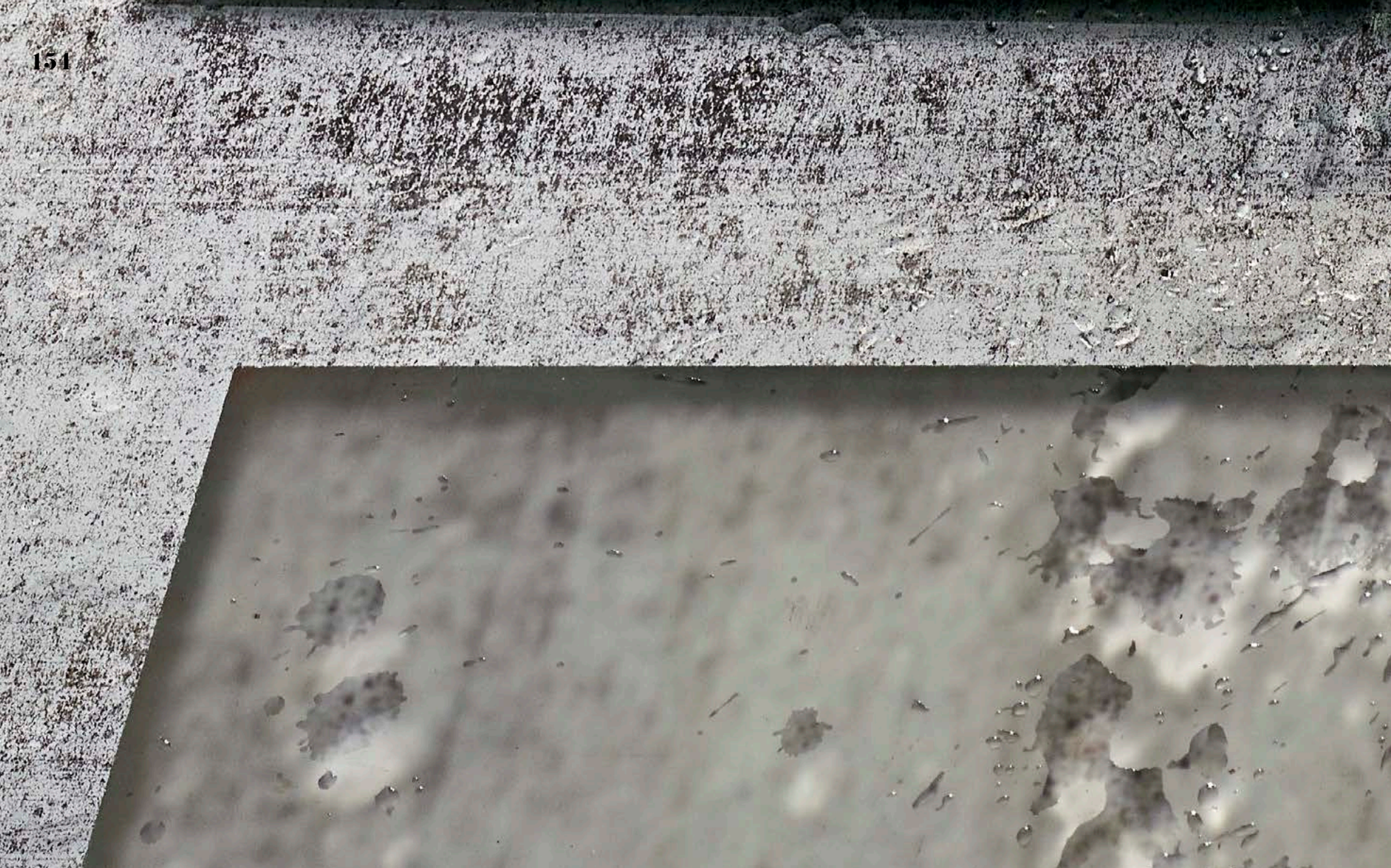
\* SicisGrip è un trattamento in fase produttiva volta a creare una superficie antiscivolo conforme con lo standard ANSI A137.1 per DCoF

\* SicisGrip is a treatment during production that creates a slip resistance surface and complies with the ANSI A137.1 standard for DCoF





154









## AVVISO LEGALE

Ricevendo il presente catalogo SICIS, prendi atto ed accetti i seguenti termini e condizioni:

Il presente catalogo è e rimane di proprietà di SICIS S.r.l. ("SICIS").

SICIS si riserva il diritto, in qualsiasi momento, di richiederne la restituzione.

Il catalogo è fornito a TITOLO GRATUITO e NON ne è AUTORIZZATA LA RIVENDITA. Se hai dovuto pagare per questo catalogo, ti preghiamo di segnalarcelo scrivendoci all'indirizzo riportato di seguito.

Le leggi in materia di diritto d'autore (Copyright) proteggono il contenuto del presente catalogo, inclusi, senza alcuna limitazione, le fotografie, immagini, testi, layout ed i disegni in esso contenuti.

La riproduzione o la copia di qualsiasi parte del presente catalogo, inclusi, senza alcuna limitazione, le fotografie, immagini, testi, layout ed i disegni in esso contenuti, È VIETATA, e SICIS si riserva il diritto di intraprendere azione legale nei confronti di chiunque (incluso te) violi il presente divieto.

L'aver ricevuto una copia del presente catalogo, non dà diritto in alcun modo ad alcuna licenza da parte di SICIS, né implicita né tantomeno espressa, di riprodurre o copiare, in qualsiasi modo o forma, alcuna parte di esso.

Il marchio SICIS® è un marchio registrato e di proprietà della SICIS S.r.l., ed è protetto dalle leggi nazionali ed internazionali in materia.

SICIS espressamente si riserva tutti i diritti e rimedi.

## LEGAL NOTICE

By retaining this SICIS catalogue, you acknowledge and agree to the following:

This catalogue is and remains the property of SICIS S.r.l. ("SICIS").

SICIS reserves the right, at any time, to request the return of this catalogue.

The catalogue is provided to you FREE OF CHARGE and is NOT FOR RESALE. If you paid for this catalogue, please write to SICIS at the address provided below.

Copyright laws protect the content of this catalogue, including, without limitation, the photographs, images, text, layout and designs contained therein.

The reproduction or copying of any part of this catalogue, including, without limitation, the photographs, images, text, layout and designs contained therein, IS PROHIBITED, and legal action may be commenced against anyone, including, but not limited to, yourself, who violates this prohibition.

By giving you a copy of this catalogue, SICIS is not thereby giving you any license, either implied or express, to reproduce or copy it or any parts of it, in any way.

The trademark SICIS® is a registered trademark and the property of SICIS S.r.l., and is protected under domestic and international laws.

SICIS reserves all its rights and remedies.

info@sicis.com · Sicis s.r.l. Via Canala, 85 · 48123 Ravenna (Italy)

© 2017, Sicis s.r.l. Ravenna (Italy) · Printed in Italy · September 2017

## SICIS

Showroom Milano 20121 · Via Fatebenefratelli, 8

Ph. +39 02 87 60 99 · Fax +39 02 72 09 68 53

Factory Ravenna (Italy) · Fax +39 0544 46 98 11

## SICIS FRANCE

Showroom Paris 75008 · 41, Rue François 1er

Ph. +33 (0)1 49 52 89 89 · Fax +33 (0)1 49 52 89 90

## SICIS UNITED KINGDOM

Showroom London · 15A Dover St, Mayfair, W1S 4LR

15A Dover St., Mayfair, W1S 4LR London

Ph. +44 (0) 207 491 9849

## SICIS TURKEY

Sicis Istanbul-European Showroom

Maçka Cad. No:1 Nişantaşı

Ph. +90 212 240 25 96 · Fax +90 212 240 25 64

## SICIS HONG KONG

Showroom Hong Kong · Queen's Cube

235/237 Queen's Road East, Wan Chai

Ph. +(852) 2832 2830 · Fax +(852) 2833 9009

## SICIS NORTH AMERICA

Corporate Headquarters New York

150 Bruckner Blvd Bronx NY 10454

Ph. +1 212 965 4100 · Fax +1 646 390 4587







SICIS®

[WWW.SICIS.COM](http://WWW.SICIS.COM) [info@sicis.com](mailto:info@sicis.com)